



making sense of heritage

Portland Works, Sheffield, South Yorkshire

Conservation Plan
Volume 2



Ref: 100880.02
December 2013

Block A - Basement 1**1.1**

Location Positioned at the east end of the principal front range, and accessed from the central courtyard. Internal access is also gained from Block D, basement 4 (1.4)

History

Contemporary with rest of front range (Block A), dating to 1877 (phase 1). The lightwells to the north were altered when the ground floor extension was built during phase 6.

Architectural Elements**Significance**

Layout/circulation/access	This room was originally a single space, rectangular in plan, with external access to the north and internal access with basement 4, Block D. The once single room has been sub-divided using modern brick partitions, into three rooms. Alterations to the lightwells and access to the north was likely after the addition the phase 6 extension. The internal layout and access was also likely altered during WW2 when the space was utilised as an air raid shelter.	3
Wall	All external structural walls are a mix of hand-made red brick and sandstone, internally painted. Modern partitions are built using a modern machine-made brick. The easternmost room contains a paint scheme of a green lower half, and white upper half – fairly typical of industrial working spaces. The remainder of the rooms were painted white.	4
Ceiling	The ceiling is a lath and plaster construction, painted white. Large areas of plaster are missing, exposing the laths beneath. Oil from former machinery within the room above has penetrated the ceiling structure, saturating it.	4
Floor	The floor is a concrete surface throughout - likely original.	4
Windows	All lightwells along the south side have been blocked, although some original timber casements have been retained. These appear to be in a fairly poor condition however. The same goes for those to the north, however, one window towards the west end of the space has been converted to a doorway, leading from the space below the later extension. All fenestration has bull-nosed brick jambs.	3

Block A - Basement 1**1.1**

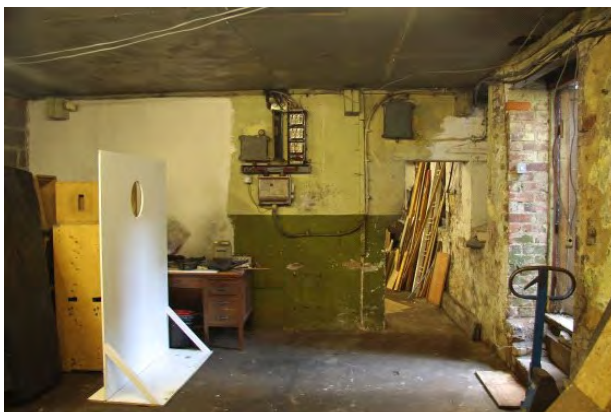
Doors	Original doorway to the north, providing external access has been widened, and double doors attached. – possibly when the space was used as an air raid shelter so that more people could get in as quickly as possible. At the eastern end of the room, an original doorway opening (no door) provides access to the adjacent room (basement 4, Block D). This has been partially blocked with blockwork. At the western end, a former window has been converted to a doorway to provide secondary pedestrian access from beneath the phase 6 extension to the north. All original doorway openings have bull-nosed brick jambs.	2
Fixtures and fittings	Few fixtures or fittings retained. Inserted overhead timber beams were within sub-divided rooms.	5
Power	No power observed.	1
Heating	Large brick built fireplace is present at the east end of the space. There is also a chimney stack with either blocked fireplace or inserted flue at the west end (not fully observed).	4

Discussion and Assessment of Significance**Level: 4**

The basement space has lost some of its original character, which was once used as a silversmiths workshop, by its sub-division and blocking of the lightwells. However, its sub-division may be related to the later use as an air raid shelter for the works - an important part of its history. Reinstatement of the windows/lightwells would be greatly beneficial, adding aesthetic and evidential value to the space.

Management Issues

Currently the space is used as a store. No heating or natural light. The current condition survey suggests the full blocking and capping of the lightwells. This would be detrimental to the character of the space. Reinstatement would add to the aesthetic and evidential value of the space.



IMG_2010

Block A - Basement 2

1.2



Location

This basement room is positioned adjacent to the east side of the cart passage, beneath the ground floor workshop (1.9). Only access is via a small hatch within the ground floor workshop floor.

History

The room is contemporary with the construction of Block A (Phase 1).

Architectural Elements

Significance

Layout/circulation/access	A simple square room with access via a hatch in the ceiling with simple timber staircase. The northeast corner contains a brick partitioned space, which had no access. To the south was a central coal chute within the wall. Two secondary RSJs resting on blockwork piers span the room.	4
Wall	All walls are plain red brick. A hole/recess within the west wall exposes sandstone behind the brick.	4
Ceiling	The room has exposed timber joists with noggins.	4
Floor	Not visible.	5
Doors	Hatch within the ceiling.	4
Fixtures and fittings	Coal chute in south wall.	3
Power	No power.	5
Heating	No heating.	5

Discussion and Assessment of Significance

Level: 4

The original function of this basement room is not fully understood. Although clearly used to store

Block A - Basement 2

1.2

coal, the partitioned section at the northeast corner may suggest the position of a possible hoist/lift? The room in itself however is not architecturally significant and retains very few fixtures or fittings.

Management Issues

Currently the space has no heating, or lighting and is damp. The room is currently used as a 'store'. Clearance and full inspection is required.



IMG_1835

Block A - Basement 3**1.3****Location**

Positioned to the west of the cart passage, below and part of the former caretaker's house (1.7). Access is via a stone staircase at the north side of the room above.

History

Contemporary with the construction of Block A (phase 1).

Architectural Elements**Significance****Layout/circulation/access**

The room is trapezoidal in plan, being positioned on the curved corner of the range. Access is via a stone staircase at the north side of the room. A coal chute is located within the south wall and the chimney stack serving the above room is to the west.

3

Wall

All walls are hand-made red brick with remains of white former white washing.

4

Ceiling

The ceiling is lath and plaster, although only a small amount of plaster is retained.

4

Floor

Not visible, but likely stone flags.

4

Windows

None.

5

Doors

Door leading from room above at top of staircase (1.7). Possibly original timber panelled door, re-hung within new frame.

4

Fixtures and fittings

Coal chute in south wall.

3

Power

None.

5

Heating

None.

5

Discussion and Assessment of Significance**Level: 4**

The room originally served as a cellar with coal chute for the caretaker's house. It's significance is fairly limited, but retains its domestic character.

Management Issues



Block A - Basement 3

1.3

The room is currently used as a store and is fairly damp. There is no heating or natural lighting. The space requires clearance and inspection.



IMG_1872

Block D - Basement 4

1.4



Location

This is a basement room at the southern end of Block D, and to the north of basement 1, Block A (1.1), and below 1.32.

History

Contemporary with the construction of Blocks A and D (phase 1). Secondary access added in 20th century when the southernmost former window was converted to a door. Originally part of the silversmiths shop.

Architectural Elements

Significance

Layout/circulation/access

The room is trapezoidal in plan and is accessed via an internal doorway to the south from basement 1, Block A and externally from an altered former window and metal staircase in the courtyard to the west.

3

Wall

All walls have been plastered and painted throughout. Much of the plaster and paint has fallen off the north wall revealing its construction with sandstone.

4

Ceiling

The ceiling is painted lath and plaster. Some patches of plaster missing.

4

Floor

Concrete floor surface throughout.

4

Windows

All the windows are located within the west wall and have been blocked internally with blockwork. All timber casement windows are retained externally. Former southernmost window has been converted to a door.

3

Doors

Within the south wall there is a primary doorway opening into Basement 1, Block A (1.1) which has been partially blocked at the bottom with blockwork. The former southernmost window in the west wall has been converted to a doorway with timber steps leading to the room. This was probably done during phase 6 when the basement was utilised as an air raid shelter during WW2.

4

Fixtures and fittings

A brick built fireplace is located within the northeast corner of the room, whilst positioned high within the north wall at the west end is a metal box fitting, possibly a wall box.

4

Block D - Basement 4**1.4**

Power	Power was originally available within this room from the room above (1.32).	4
Heating	An altered but original brick built fireplace is located within the northeast corner of the room.	4

Discussion and Assessment of Significance**Level: 3**

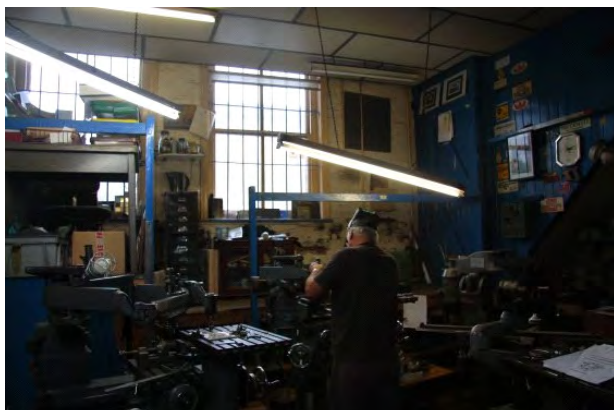
The basement space kept much of its original character, once used as part of the silversmiths workshop. Alterations have been made, relating to the later use as an air raid shelter for the works - an important part of its history.

Management Issues

Currently the room is used for storage, but has damp problems. Better access, natural light and heating are need for this to be used for anything other than storage. The reinstatement of the lightwells/windows would be beneficial to the space, adding to the aesthetic and evidential value of the space.



IMG_2005

Block A - Ground Floor 1 (10a)**1.5****Location**

This is a workshop room at the west end of the principal range (Block A) fronting Hill Street. Block B is attached to the northeast.

History

This end of Block A appears to be either of a later construction, or certainly later incorporation into the works. All openings are inserts and the principal façade detail has been added into the façade, attempting to match that within the remainder of the elevation to the east. An historic photograph depicts the room as an electroplating shop.

Architectural Elements**Significance****Layout/circulation/access**

This is a single room, square in plan on a split level. There is a secondary raised platform floor at the southeast side of the room, and access from a doorway at the west corner. This leads from a small secondary hall/lobby from an external inserted doorway in the principal elevation which also accesses the first floor via a timber staircase. A small set of steps link the raised floor of the room with the lower, original floor level in the remainder of the room. Access is also gained from a possibly altered doorway in the northeast corner from the internal yard of the works.

3

Wall

All walls are painted brick.

5

Ceiling

Modern suspended ceiling obscuring original above.

5

Floor

Raised timber floor at the southwest side. Remainder of floor is concrete.

4

Windows

Two inserted windows within the southwest wall with timber sashes and moulded architraves. These are not indicative of workshop spaces, but more accustomed to higher status spaces.

3

Doors

Secondary inserted doors at the southwest corner of the room and altered doorway to the northeast with overlight.

4

Fixtures and fittings

No original extant fixtures and fittings visible other than a single low wall box in the northwest wall.

3

Block A - Ground Floor 1 (10a)**1.5**

Power	Single low wall box in the northwest wall, indicating power transmission within the room.	3
Heating	No evidence of heating noted.	5

Discussion and Assessment of Significance**Level: 3**

This space - essentially a small workshop - has few retained original features, fixtures or fittings, with the exception of a single wall box. The windows are of a higher status, and the staircase to the west is an insert. The space is a product of multiphased construction and is depicted c. 1908 as an electroplate shop. Any features once relating to the process of electroplating within the room have largely been removed without trace. The current modern suspended ceiling detracts from the original use and character of the space.

Management Issues

The room is currently used as a workshop space. Little management is needed, although the removal of the modern suspended ceiling would be beneficial to the aesthetic value of the space.



IMG_1951



IMG_2076

Block A - Ground Floor 2 (Meter rooms/toilets)

1.6



Location

This area comprises three rooms – toilets, with flanking rooms likely utilised as meter rooms (no access). These are at the west end of Block A, the principal range, fronting Hill Street and to the east of 1.5.

History

The general walls of the toilets and eastern room appear to be contemporary with the construction of the works during phase 1 (1870s). However, the western room and alterations throughout may be of a slightly later phase. An observed straight joint within the brickwork of the southwest elevation is suggestive of heavy alterations to the west end of 1.6 and also 1.5.

Architectural Elements

Significance

Layout/circulation/access	All rooms are rectangular in plan. The central toilets and room to the west have access only from the courtyard, whilst the eastern room has access from both the courtyard and Hill Street. There is no internal access/circulation between the adjoining rooms.	4
Wall	White painted brick within the toilets. No access to flanking rooms.	4
Ceiling	Painted lath and plaster within toilets.	4
Floor	Stone flagged floor within toilets.	3
Windows	No windows, but there is a high vent within the southwest wall of the toilets, and inserted vent or window within the same wall in the western room.	3
Doors	The westernmost room has a doorway from the internal yard, with high threshold, delineating the higher ground level to Hill Street, and the position of the external staircase against the northeast elevation. This had a timber battened door with overlight. The doorway to the toilets was a simple arched opening, with no attached door. Within the northeast elevation of the eastern room was a modern double door with concrete lintel inserted within an earlier arched opening. An inserted door was also located within the southwest elevation of this room.	3
Fixtures and fittings	Unknown within the flanking rooms. Within the toilets are 6 W.C cubicles and a corner brick and tile urinal.	3

Block A - Ground Floor 2 (Meter rooms/toilets)**1.6**

Power	No power within toilets.	5
Heating	No heating within the toilets.	5

Discussion and Assessment of Significance**Level: 3**

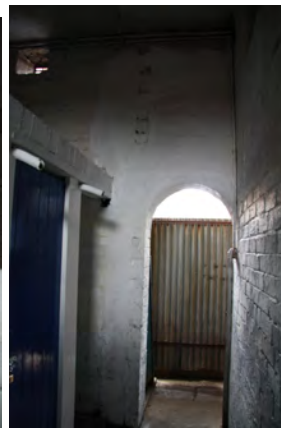
The W.C.s are a significant part and/or insertion within the works, complying within factory regulation acts. The cubicles and urinals appear fairly historic.

Management Issues

Toilets are a communal area used by all gents within the works. Some upgrading is needed, but this should be done in a way as to not lose the historic character of the space.



IMG_1556



IMG_1559



IMG_1562



IMG_2104

Block A - Ground Floor 3 (Caretaker's House) (11)

1.7



Location

Positioned on the ground floor of the curved corner of the principal range, Block A, on the junction of Randall Street and Hill Street.

History

Contemporary with the main construction of the works (phase 1). Originally this was the ground floor of the works caretaker's house.

Architectural Elements

Significance

Layout/circulation/access

This space comprises three former domestic rooms and corridor, all trapezoidal in plan due to the curved south elevation. Access is gained via two original doorways: one to the east from the adjacent cart passage (1.8), one within the south elevation from the corner of Hill Street and Randall Street. A third doorway is positioned to the northwest of this which has been inserted in a former window opening. The rooms were also connected internally. Within the eastern room, a staircase at the north end led down to the cellar (1.3) and a truncated staircase originally led to the first floor (1.15). The western room contains an inserted staircase to the first floor.

4

Wall

Walls in the eastern room were largely covered with a modern plaster board and finish, although at the north end of the west wall were remnants of early green paint work. The southern central room had modern finish throughout, whilst the corridor space to the north had painted walls, although the north wall was covered by kitchen units. The western room contained timber matchboarded walls.

4

Ceiling

The ceilings were all painted lath and plaster. The eastern and the southern central room had modern plastered and painted ceilings.

4

Floor

Covered timber floor boards in the central and eastern rooms. The western room had exposed timber floor boards.

4

Windows

Original timber sashes retained. A window within the eastern wall of the eastern room, overlooking the cart passage (1.8) has been blocked internally, along with one in the north wall of the western room.

4

Block A - Ground Floor 3 (Caretaker's House) (11)**1.7**

Doors	A possible original timber panelled door had been retained. The original front door has also been retained. A door within the southeast wall of the western room had been inserted within a former window opening.	5
Fixtures and fittings	Few original fixtures were visible as having been retained. Some original skirting was evident along with moulded architraves	4
Power	No power transmission.	5
Heating	Former fireplaces were present within each of the main rooms, however all had been blocked/covered.	4

Discussion and Assessment of Significance**Level: 3**

Originally the ground floor of a caretaker's house, the space contains the only remnants of the former domestic spaces within the works. Although many fixtures and fittings have been removed or covered, the general layout has been retained. Truncation of the original staircase and insertion of a modern stair has affected the significance of the space.

Management Issues

The southern central room and the eastern room are both currently used as showrooms, whilst the west room is a store and loading area for the workshops on the first floor. The retention of the remaining domestic features such as skirting and architraves would be beneficial along with the possible reinstatement of the original staircase. This would increase the aesthetic and evidential value of the space.



IMG_1890

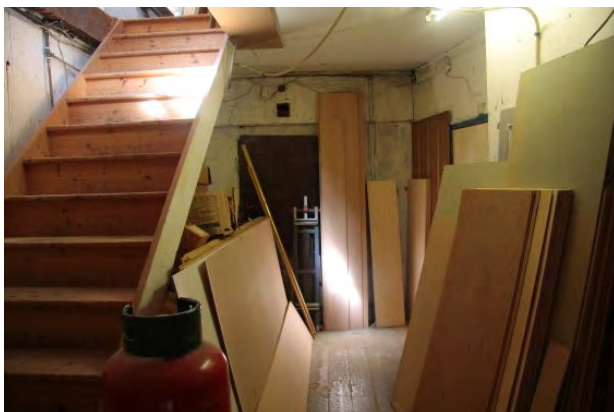


IMG_1897



Block A - Ground Floor 3 (Caretaker's House) (11)

1.7



IMG_1899



IMG_1902

Block A - Ground Floor 4 (Cart Passage)**1.8****Location**

Positioned off centre within the principal range, Block, A, but at the west end of Randall Street, and to the east of 1.7 and west of 1.9.

History

Contemporary with the phase 1 construction of the works and Block A.

Architectural Elements**Significance****Layout/circulation/access**

Rectangular in plan, this is the cart passage entrance to the works, with entrance from Randall Street.

3

Wall

The principal south elevation of the cart passage has decorative stone quoin pillars with plastered signage area above. Internally the walls are painted brick. At the rear, the original cart passage has been obscured by later additions of the works.

2

Ceiling

Painted lath and plaster of the original cart passage. To the north, within the later addition, the ceiling has a corrugated metal sheeting covering.

4

Floor

Stone setts with later coverings of tarmac (worn).

3

Windows

Within the west wall of the cart passage is a window serving the adjacent former caretaker's house (1.7).

3

Doors

Within the west wall of the cart passage are two doorways, each with replacement doors - one serving the former caretaker's house (1.7) and a later added W.C. The east wall contains a single doorway with replacement door leading to a workshop space (1.9) in the phase 1 cart passage. To the north within the later phase 3 addition is a loading door.

4

Block A - Ground Floor 4 (Cart Passage)**1.8**

Fixtures and fittings	Modern gates are attached to the southern opening. Large hinges are present on the former northern opening of the cart passage for a second gate into the works. A stone bollard is positioned adjacent to the west pillar of the south façade of the cart passage, protecting the quoins from vehicular damage. In addition, above the doorway in the east wall is a timber beam, continuing internally into the workshop (1.9). In addition, at the northern end, within the ceiling above is a loading door for the floor overhead (1.16/1.14). Fixed on the east wall are tenant post boxes.	4
Power	No power.	5
Heating	No heating.	5

Discussion and Assessment of Significance**Level: 2**

The cart passage is a significant feature of a Sheffield integrated works, providing vehicular access to the works for the delivery of raw products and collection of merchandise. The appearance of the cart passage has remained unaltered from views from the road which are of high significance. Whilst additions have been made to the rear, these were added at the turn of the 20th century and are historic. It is, in addition, fairly unusual for a works of this size that the cart passage did/does not contain its own weigh machine. Later tarmac coverings over original stone setts is detrimental to the aesthetic character of the cart passage.

Management Issues

The cart passage is the main entrance to the works and contains the tenants post boxes. The architectural detail of the cart passage opening makes an essential contribution to the special historic character of the works as a whole and needs to be conserved. Removal of later tarmac coverings would be advantageous.



IMG_1378

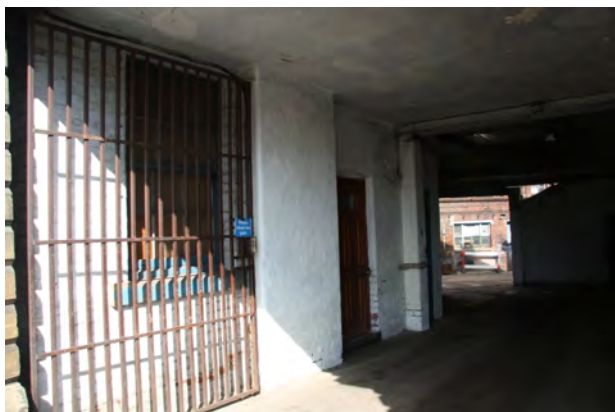


IMG_1382

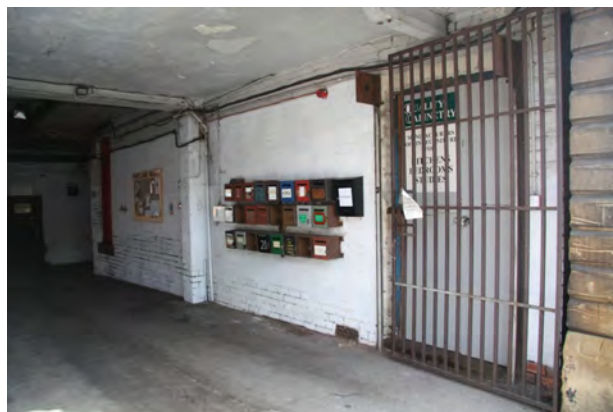


Block A - Ground Floor 4 (Cart Passage)

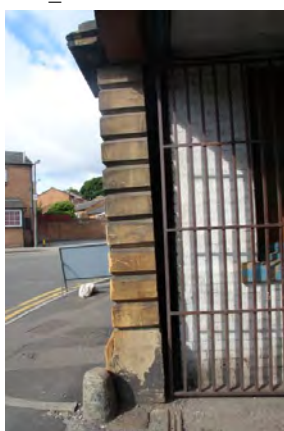
1.8



IMG_1386



IMG_1387



IMG_1391



IMG_1395

Block A - Ground Floor 5 (13)**1.9****Location**

Located to the east of the cart passage (1.8), and fronting Randall Street. A later phase 3 workshop (1.12) was added to the rear/north and to the east is 1.10.

History

The workshop is contemporary with the phase 1 construction of the works. Originally two rooms, it has been altered to a single open room.

Architectural Elements**Significance****Layout/circulation/access**

The workshop is rectangular in plan, with access from the cart passage (1.8) to the west and main entrance hallway (1.10) to the east. A former central partition has been removed creating a single space. A modern partitioned off W.C. is positioned in the northeast corner of the room. The western half of the room is located above basement 1.2, which is accessed via a hatch within the floor. The northeast corner of this western half contained scars within the north wall delineating the position of a former partition which was square in plan. Also within the north wall of 1.9 are two blocked doorways, a blocked window, and a retained window. A former fireplace was located at the east end of the room.

4

Wall

All walls are painted brick.

4

Ceiling

Painted lath and plaster of the ceiling at the far western end, whilst the remainder has a modern plaster board covering. A hatch is located within the ceiling positioned above the hatch in the floor leading to the basement. A timber beam runs from the cart passage (1.8), into the room, above the western doorway.

5

Floor

The floor comprises exposed timber floor boards on timber joists within the western half. The eastern half is concrete.

4

Windows

A sash window has been retained in the north wall, whilst to the south are five original sashes. These have modern plaster boards covering the lower halves.

3

Doors

There is a modern door to the west from 1.8, whilst to the east is an original timber panelled door leading from 1.10

4

Block A - Ground Floor 5 (13)**1.9**

Fixtures and fittings	Very few retained fixtures and fittings, with the exception of a timber beam is positioned attached to the ceiling at the west end of the room above the west door, which continues through the west wall into the cart passage 1.8.	4
Power	No power observed.	5
Heating	A fireplace is positioned at the east end of the room. This would have heated the original eastern room only. The former western room appears to have no heating.	4

Discussion and Assessment of Significance**Level: 4**

The western half of the room was likely originally a time office or loading room, and did not require heating or power. The eastern half however was of a higher status with fireplace, and accessed directly off the main entranceway and lobby 1.10. The space's significance has been affected by the opening up of the former two rooms into a single space, thereby altering the former two different functions of the spaces.

Management Issues

The space is currently utilised as a joiners workshop. Few fixtures and fittings mean that management of the space is fairly limited to the conservation of windows, original door and hatch within the floor to 1.1.2.



IMG_1854



IMG_1860



IMG_1863



IMG_1865

Block A - Ground Floor 6 (Circulation & Toilets)**1.10****Location**

This is positioned between the workshops 1.9 and 1.11 within the principal Block A, fronting Randall Street.

History

Built during phase 1, contemporary with the remainder of Block A. The space has undergone little alteration.

Architectural Elements**Significance****Layout/circulation/access**

This space comprises a ground floor hallway, W.C and rear lobby, staircase with first floor landing and W.C.s. The space is rectangular in plan, with the W.C.s positioned to the north, projecting from the line of the main northern elevation. The ground floor is accessed via the main pedestrian entranceway from Randall Street, with extant timber double doors. From the ground floor hallway, access to workshop 1.9 is to the west via a doorway with retained timber panelled door and moulded architrave, and access to workshop 1.11 is to the east via a modern replacement door. At the north end of the hallway is a doorway to the rear lobby and W.C. A doorway also leads to the rear yard of the works. The staircase leads to the first floor landing which from there gives access to first floor workshops 1.17 and 1.18 to the east and west. To the north of this, accessed from workshop 1.18 are W.C.s serving the former showroom and later burnishing and polishing shop.

2

Wall

The walls are plastered and painted and contain original high and deep moulded skirting boards, inlaid dado. Detracting from the original character and aesthetic value of the space is graffiti around the northern curved wall of the staircase. Some areas of plaster are also missing in places.

2

Ceiling

The ceiling of the staircase at first floor is painted lath and plaster and has retained original moulded coving. At ground floor the underside of the staircase has been painted white.

2

Floor

The ground floor has a stone flag covering. The staircase has stone treads.

2

Block A - Ground Floor 6 (Circulation & Toilets)**1.10**

Windows	At ground floor there was a single sash window to the north serving the W.C. At first floor a large sash window in the south wall with moulded architraves and sill lit the landing area. Within the first floor W.C.s, two original sashes with moulded architraves had been retained.	2
Doors	Historic doors had been retained along with moulded architraves on the main ground floor entrance way, the doorway to 1.9, the ground floor door to the rear lobby and the rear door leading to the works yard. At first floor, those leading off the landing were modern replacements, although their architraves had been retained. The doorway from workshop 1.18 to the W.C.s was also original along with one of the first floor W.C.s cubicles.	2
Fixtures and fittings	Original fixtures and fittings include cast iron balustrade, hardwood handrail, coving, dado, skirting boards, doors, architraves and windows.	2
Power	No power.	5
Heating	No heating.	5

Discussion and Assessment of Significance**Level: 2**

This space is highly significant retaining a large quantity of original features relating to the space's original high status, leading to an original showroom and later burnishing and polishing workshop, and higher status offices of the works. Sensitive refurbishment of the space would be greatly beneficial.

Management Issues

The area is currently a circulation area which provides access to 1.9, 1.10, 1.17 and 1.18, which has original features in need of some attention. The removal of graffiti on the wall of the main staircase would be greatly beneficial to the space, as this currently has a negative impact on the historical character of the space. Replacement of modern doors with in-keeping timber doors, whilst refurbishment of original doors, would be a positive contribution to the aesthetic value of the space.



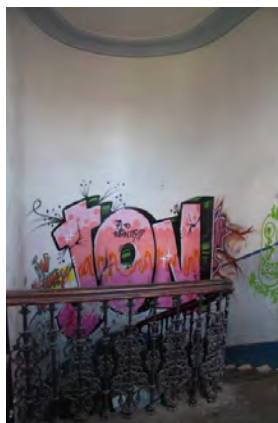
IMG_1722



IMG_1725

Block A - Ground Floor 6 (Circulation & Toilets)**1.10**

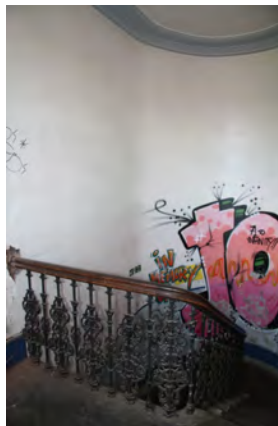
IMG_1726



IMG_1784



IMG_1786



IMG_1789



IMG_1804



IMG_1811



IMG_1820



IMG_1821



Block A - Ground Floor 6 (Circulation & Toilets)

1.10



IMG_1830



IMG_1832

Block A - Ground Floor 7 (1)**1.11****Location**

Positioned at the east end of the principal range, Block A, fronting Randall Street.

History

Contemporary with the phase 1 construction of the works, with a phase 6 addition to the north. Original matchboard partitions have been removed and modern partitions have been erected. In 1908 the room was used as the knife inspection department.

Architectural Elements**Significance****Layout/circulation/access**

A single main rectangular room with two modern partitioned rooms at the west end, and a smaller rectangular room attached to the north which has also been sub-divided by modern partitions. An internal doorway provides access between the two rooms. Access into the space is from a doorway to the west from hallway 1.10 and from a doorway in the north wall of the north room from the yard of the works. A former doorway (now blocked) would have originally provided internal access with 1.32 of Block D.

3

Wall

The walls are painted brick with the exception of the modern partitions which are painted plasterboarded studs. Within the south wall of the southern room are two scars delineating the position of two former brick buttresses which have been removed.

4

Ceiling

Modern plasterboard covering throughout.

5

Floor

Modern boarding covering timber floor boards (damaged by oil penetration from former machinery since removed).

5

Windows

The south wall of the south room contains 9 original timber sash windows. The north wall of the south room has three original timber casement windows. Metal bars have been added internally in front of all fenestration for security. The north room contains 3 timber casement windows, one of which is a modern replacement. A blocked window is positioned at the east and west ends of the north room also.

2

Block A - Ground Floor 7 (1)**1.11**

Doors	No original doors have been retained. A modern replacement door serves the opening with 1.10 to the west, whilst that joining the two rooms internally is an inserted opening with modern door. The north wall of the south room also contained two blocked doors, one at the east end which originally accessed Block D and an inserted opening which would have accessed the north room. A large double door was positioned in the north wall of the north room.	5
Fixtures and fittings	No original fixtures or fittings. The northern room contains only modern fixtures and fittings throughout.	5
Power	No power.	5
Heating	Blocked fireplaces are positioned at each end of the southern room. No heating within the later northern room.	5

Discussion and Assessment of Significance**Level: 4**

The previous removal of original partitions, and modern additions within the space along with the blocking of fireplaces and refurbishment of the north room have affected the significance of the space. However, the main space within the southern room is essentially a large open space which reflects the former workshops' essence.

Management Issues

The space is currently utilised as a photographic studio with modern finishes and fixtures and fittings throughout the space. Well maintained space. Conservation of retained windows is needed. Conservation of the windows is needed, and possibly replace modern door to the west with one which is more in keeping with the historic character of the space.



IMG_1493



IMG_1497



Block A - Ground Floor 7 (1)

1.11



IMG_1502



IMG_1508



IMG_1509

Block A - Ground Floor 8 (12)

1.12



Location Located at the rear/north of 1.9 of the principal range and forming part of the east side of the addition to the cart passage 1.8.

History

This is a phase 3 addition to the north of the range, originally as a single square room in plan at ground floor. Added during phase 8, a second room is attached to the east.

Architectural Elements

Significance

Layout/circulation/access

Two rooms: the earlier western room is square in plan, whilst the later eastern room is rectangular plan. An inserted opening between the two rooms provides internal access. The western room was originally an extension to the western half of 1.9 to the south. This was a storage and loading area. Blocked doors within the dividing wall indicate the flow between the rooms. A loading door which has a raised threshold externally for ease of vehicular loading/unloading is positioned within the west wall of the western room, opening directly onto the cart passage (1.8). The eastern room was added much later and has a significantly lower floor level. Access is gained via a large roller shutter door within the east wall of the eastern room.

4

Wall

The walls are painted brick and exposed blockwork.

5

Ceiling

A modern ceiling is present throughout.

5

Floor

Concrete floors throughout.

5

Windows

Internally all windows are blocked apart from those within the phase 8 eastern room which are all modern. Externally the window within the north wall of the western rooms contains a timber sash. A blocked window is located within the south wall of the eastern room, originally serving 1.9.

5

Doors

A modern replacement door has been fitted to the loading door within the west wall of the western room. A large roller shutter door is located within the east wall of the east room. Two blocked doors are located within the south wall, once providing access to 1.9.

5

Fixtures and fittings

All modern fixtures and fittings observed.

5

**Block A - Ground Floor 8 (12)****1.12**

Power	No power.	5
Heating	No heating.	5

Discussion and Assessment of Significance**Level: 4**

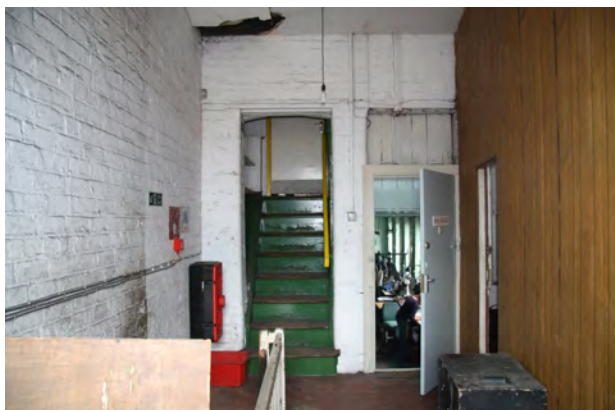
The separation of the western room from 1.9 to the south and the addition of the later room to the east has detrimentally affected the significance of the space. Construction with blockwork and the covering of the external walls with spray paint has a negative impact to the character of the works, and therefore it's value.

Management Issues

Currently the space is used as an electrical workshop with few management issues. Externally the walls need attention in terms of water damage and spray paint. This in addition to exposed blockwork is not aesthetically in keeping with the character of the works.

Block A - First Floor (24)

1.13



Location

The west end of the principal range, Block A, at first floor level.

History

The exact date of this end of the building is unknown. All openings within the south-western elevation, fronting Hill Street, are inserted. It would appear that this part of the building has undergone significant alterations/rebuilding prior to phase 3/1908.

Architectural Elements

Significance

Layout/circulation/access

Generally rectangular in plan with access from an inserted staircase at the west end from 1.5 below. The space has historic partitioned small rooms/store cupboards at the east end, and modern partitions creating a landing space, office and small corridor. Inserted doorways within former window openings in the north wall provide access to the first and second floors of the west range, Block B. Blocked openings formerly accessed 1.14 to the east.

4

Wall

The main external walls are all painted brick. Modern partitions have a wooden veneer matchboard covering or plasterboard.

4

Ceiling

Painted lath and plaster. Some areas of lath and plaster are missing due to water ingress.

4

Floor

Lino covering over timber floor boards.

5

Windows

Timber sash windows within the south wall, timber casements within the north wall – varying in size.

3

Doors

All modern doors apart from historic timber panelled doors to the small stores rooms to the east.

5

Fixtures and fittings

Very few fixtures and fittings – a modern W.C has been inserted within the northeast room, whilst the southwest partition of the room has historic former timber shelving, and timber panelled doors to the southeast rooms.

4

Power

No power.

5

Heating

No heating.

5

Block A - First Floor (24)

1.13

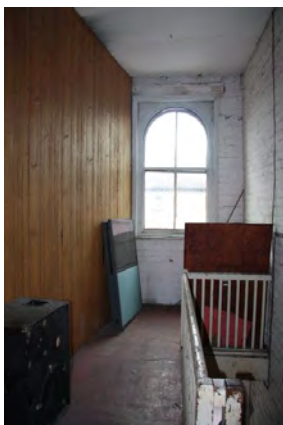
Discussion and Assessment of Significance

Level: 2

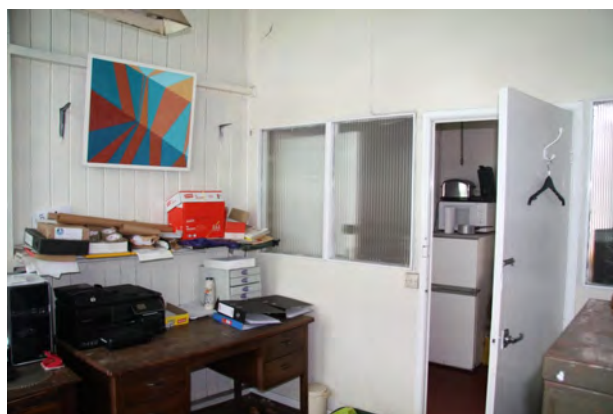
This west end of the principal range (Block A) is not currently fully understood. The partitioned spaces/rooms at the east end of the space are clearly historic, but are unlikely to date to the phase 1 construction of the works. The inserted modern partitions have altered the form of the space.

Management Issues

The area is currently used as an office with store and small kitchenette and W.C. with access to the first and second floors of Block B. Damage from water ingress from the roof is prevalent and should be seen as a priority for this area.



IMG_1977



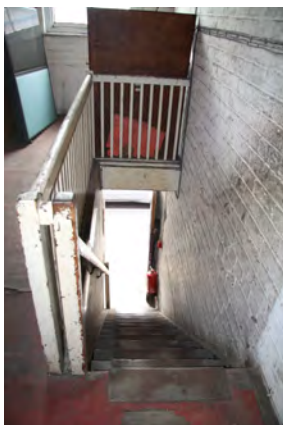
IMG_1982



IMG_1994



IMG_2000



IMG_2002

Block A and E - First Floor 2 (25, 26-3)**1.14****Location**

Located to the southeast of 1.13, on the first floor of the principal range, Block A, overlooking Hill Street, with later phases of additions to the northeast which are resting on columns and RSJs (Block E).

History

Originally the south-western room was constructed during phase 1, but has undergone some significant rebuilding/alterations, with the additions to the northeast constructed during phase 4.

Architectural Elements**Significance****Layout/circulation/access**

The south-western room is a rectangular room in plan within the principal range. To the northeast is an addition, irregular in plan with an inserted opening within two former windows giving internal access between the two areas. A modern partition has divided the north-eastern room. Access is gained via an historic external stone staircase and doorway against and within the northeast wall of the southwest room which leads from the works yard. An inserted staircase also leads from 1.7 below. The eastern end of the north-eastern room is accessed from 1.16.

4

Wall

Largely painted brick with some exposed blockwork. Within the south-western room areas of original timber matchboarding covering the brick walls has been retained

4

Ceiling

The south-western room has painted lath and plaster, whilst the north-eastern room has modern plasterboard covering. There is a small hatch accessing the roof space within the ceiling of the south-western room.

4

Floor

Timber floor boards.

3

Windows

The southwest wall of the south-western room have timber sash windows with moulded architraves retained internally, whilst the northeast wall has timber casement window. The north-eastern room has timber casements and high silled (inserted) timber fixed lights within the northwest wall.

2

Doors

Modern doors accessing both rooms from the external stone staircase.

5

Block A and E - First Floor 2 (25, 26-3)**1.14**

Fixtures and fittings	Most historic fixtures and fittings are located within the south-western room and include remnants of match boarding on the walls, moulded architraves, and possible historic tiles within the hearth of the blocked fireplace at the southeast end of the room.	3
Power	No power.	5
Heating	Blocked fireplaces at each end of the south-western room. No heating within the north-eastern room.	3

Discussion and Assessment of Significance**Level: 3**

The south-western workshop, which was likely altered/rebuilt at some point prior to phase 3, contains historic fixtures and fittings, whilst also having been altered by modern alterations and insertions. Openings within the north wall creating access to the later additions of the workshops to the northeast have altered its original layout.

Management Issues

The south-western room and western half of the north-eastern room is currently utilised as a carpenters workshop, with various alterations made in order for the space to function as such more efficiently. Removal of retained historical features should be avoided as this would affect the significance of the space further. The eastern half of the north-eastern room is being affected by water ingress which is a primary issue throughout the space. The north-eastern room would benefit from the removal of a small partitioned room at its west corner, opening the room up.



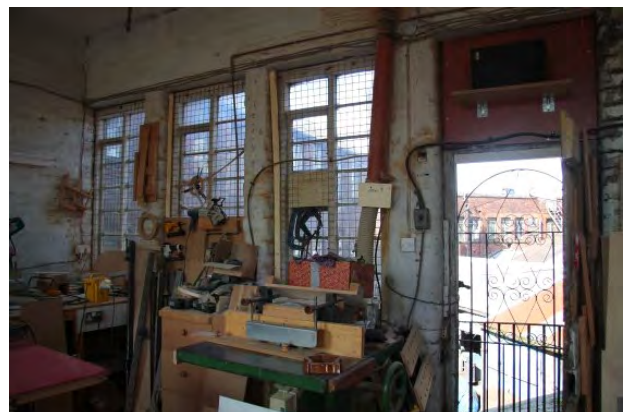
IMG_1906



IMG_1908



IMG_1914

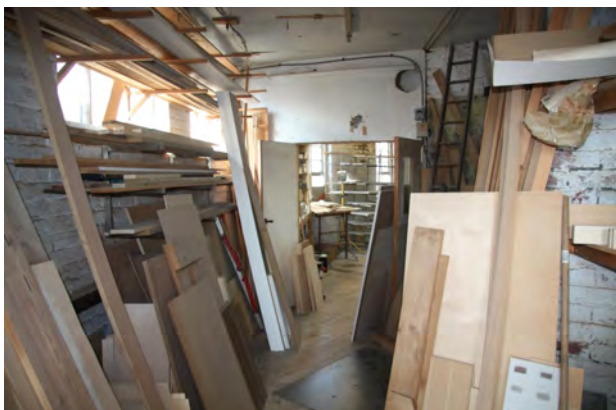


IMG_1919



Block A and E - First Floor 2 (25, 26-3)

1.14



IMG_1924



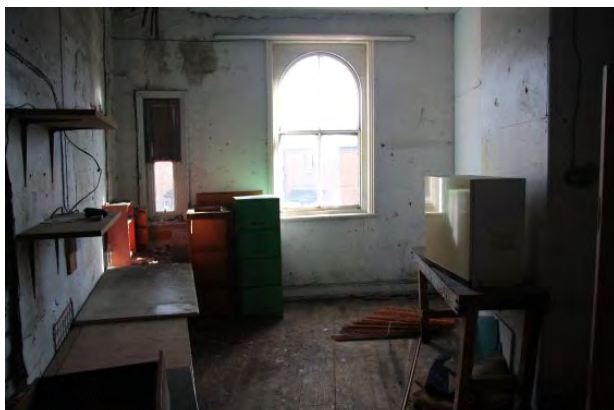
IMG_1927



IMG_2158



IMG_2161

Block A - First Floor 3 (26-1)**1.15****Location**

Positioned on the first floor of the curved corner of the principal range, fronting the junction between Hill Street and Randall Street. Workshop 1.14 is positioned to the northwest and 1.17 to the east.

History

This is contemporary with the phase 1 build of the works and principal range fronting Hill Street and Randall Street. The space comprises two rooms which were originally part of the caretaker's house at the works. These have been substantially altered and given over to workshop space. Inserted openings have created access to later additions to the north as well as the workshop 1.14 to the west.

Architectural Elements**Significance****Layout/circulation/access**

Two trapezoidal rooms above 1.7 below, with added W.C to the north and access from 1.16 to the north and 1.17 to the east. Former openings with the adjacent workshop 1.14 to the west have been blocked. Original access to the rooms from the ground floor, which would have been via a staircase rising within the eastern room has been boarded over, although part of the staircase is present beneath the floor and at ground floor in 1.7.

4

Wall

The walls of the two main rooms are plastered and painted, indicating their domestic function rather than a working space. The added W.C to the north has painted machine made bricks. Some areas of walls have modern material/carpet coverings obscuring the fabric of the walls. Original skirting boards are also retained around some of the walls. The dividing partition between the two rooms is a modern stud wall with plasterboard, either side of the central brick chimney stack.

3

Ceiling

The ceilings have painted lath and plaster throughout.

4

Floor

Timber floor boards throughout. Modern boarding covers the former staircase position at the north end of the eastern room.

3

Windows

All windows within the south elevation have retained their original moulded architraves. The eastern room has also retained the original timber sashes, whilst those in the western room are modern replacements. Two windows serve the added W.C to the north, each with original timber sashes and moulded architraves.

3

Block A - First Floor 3 (26-1)**1.15**

Doors	All doors are modern replacements. Whilst the opening to 1.16 to the north appears to have been widened, along with an inserted lower lintel. The eastern half was originally a single doorway. The doorway within the east wall of the eastern room has retained moulded architrave within the adjacent 1.17.	5
Fixtures and fittings	Original fixtures and fittings include retained skirting boards, moulded architraves and timber sash windows.	2
Power	No power.	5
Heating	Blocked fireplaces are positioned within a central chimney stack which would have served each room.	3

Discussion and Assessment of Significance**Level: 3**

This former domestic space, although altered, has significance in its unusual presence within an industrial works. The removal of the original dividing wall between the rooms, inserted opening with 1.16 and blocked off staircase have had a detrimental effect on the significance of the space however.

Management Issues

The space has been left to fall into general disrepair due to former tenancy. The area has been used for general storage and possible residential. The main walls have areas of missing plasterwork and graffiti. The spaces can be refurbished without losing any further historic fabric, fixtures or fittings. Retention of original windows, skirtings, and architraves would contribute to the evidential and aesthetic value of the space.



IMG_2198



IMG_2207



Block A - First Floor 3 (26-1)

1.15



IMG_2211

Block A - First Floor 4 (26-2)

1.16



Location

Positioned attached to the north of the original principal range during phase 3, it is accessed from 1.15 and 1.17 to the south and 1.14 to the north.

History

This was added during phase 3, between 1894 and 1905 as a new showroom for the works. Modern partitions have subdivided the room and the addition of 1.14 to the north has meant the insertion of doorways between the two areas.

Architectural Elements

Significance

Layout/circulation/access

This was a single large rectangular room with access from 1.15 and 1.17 to the south. Later access was also included from 1.14 to the north. Modern stud partitions have created small box rooms within the space, one of which is a loading door/hatch over the cart passage 1.8 below, accessed from 1.14 to the north. These rooms have created a mezzanine floor within the space, access from the east end of the room.

4

Wall

The main walls of the space are black painted brick, whilst the modern partitions are black painted studs.

4

Ceiling

The ceiling of the space has exposed decorative timber trusses with console brackets and iron tie beams. These support a flat roof above with skylight. This was once one large skylight with pitched and hipped central section. This central section has been removed and replaced with the current flat roof. Modern plasterboards cover the lower pitch of the roof.

2

Floor

Timber floor boards.

4

Windows

No windows present. The skylight however is made up of timber framed clerestory lights.

3

Doors

A large inserted doorway is positioned in the north wall accessing 1.14. A single pedestrian doorway is located within the south wall leading to 1.17, whilst a second doorway (altered and widened) links with 1.15. No historic doors are retained.

5

Block A - First Floor 4 (26-2)**1.16**

Fixtures and fittings	Very few fixtures and fittings are retained other than the decorative roof trusses. An overhead RSJ is positioned at the east end of the room running transversely across it.	4
Power	No power.	5
Heating	No heating.	5

Discussion and Assessment of Significance**Level: 2**

The space is fairly historically significant being constructed as the works elaborate showroom by 1908 and depicted in Alexander Clarks showroom photograph. The modern subdivisions, later doorway insertions and altered skylight roof have impacted on the areas significance.

Management Issues

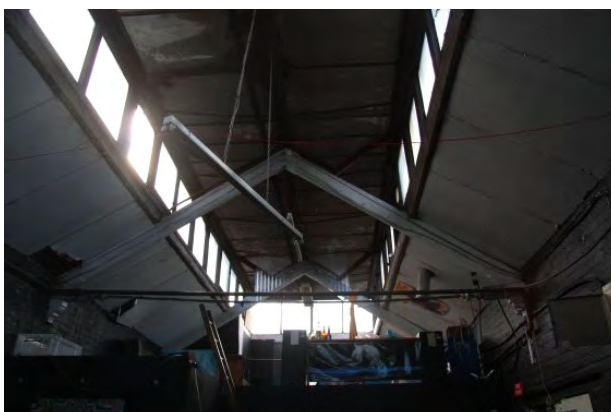
The space has most latterly been used as a music studio and general party area. The space would benefit from the removal of the modern room partitions, creating a single room again. The roof is in need of attention as water is filtrating into the room. Reinstatement of the full skylight would add to the historic character of the space.



IMG_2167



IMG_2170



IMG_2174



IMG_2182



Block A - First Floor 4 (26-2)

1.16



IMG_2187

Block A - First Floor 5 (27)

1.17



Location

This area is positioned on the first floor of the principal range, fronting Randall Street, continuing over the cart passage (1.8) to the west and is to the west of 1.10. 1.16 is located to the north.

History

This space is contemporary with the phase 1 construction of the works and was originally two rooms. Modern partitions have subdivided the once single east room into three rooms, a W.C and a corridor. The north wall has also undergone alterations after the addition on 1.16 to the north.

Architectural Elements

Significance

Layout/circulation/access

The space has a single room to the west, positioned above the cart passage with access from 1.15 to the west. To the east of this is a large rectangular room in plan with modern partitions subdividing the room. These two areas are internally linked by a doorway in the dividing wall. Access to the space is via 1.10 to the east.

4

Wall

The walls are painted brick in places or covered with a modern timber match board cladding. The west room has a woodchip wall paper covering.

5

Ceiling

The original ceilings are obscured by modern suspended ceilings.

5

Floor

The floor was constructed of timber floor boards, however the majority of floor throughout the space was obscured by rubbish.

4

Windows

The south elevation contains 9 windows, of which 8 were original sashes, and 1 was a modern replacement. All had retained their moulded architraves. Three blocked windows are positioned within the north wall of the western room.

2

Doors

No original doors have been retained, although within the west wall of the western room, moulded architrave has been retained surrounding the doorway with 1.15.

4

Fixtures and fittings

Very few fixtures and fitting observed.

5

Power

No power.

5

Block A - First Floor 5 (27)**1.17****Heating**

The western room contained a blocked fireplace within the west wall, whilst the eastern room contained a fireplace with 20th century gas fire.

4

Discussion and Assessment of Significance**Level: 3**

The area has little remaining in historical features and the layout has been altered. It's likely that the space was originally used for packing or offices being in close proximity to the showroom and not requiring any power.

Management Issues

The space has most recently been utilised for storage which has over taken the space. The area needs clearing, removal of modern partitions and removal of graffiti. Retention and conservation of original windows and architraves would be advantageous for the aesthetic and evidential value of the space.



IMG_2222



IMG_2225



IMG_2229



IMG_2237

Block A - First Floor 6 (18)

1.18



Location

This is located at the east end of the first floor of the principal range fronting Randall Street, to the east of 1.10.

History

This is contemporary with the phase 1 construction of the works. The space was originally a showroom until the 1.16 was constructed. By 1908 the room was used as a burnishing and polishing shop. A former central glazed partition once divided the room. This has been removed and modern stud partitions have been inserted.

Architectural Elements

Significance

Layout/circulation/access

The space was originally a single long room, rectangular in plan with central glazed partition. This has been removed and modern partitions have been inserted creating a lobby area at the west end and creating a smaller second room at the east end. Access to the space is gained via 1.10 to the west, and the first floor toilets of 1.10 serve and are accessed via, this room. A doorway at the east end of the north wall of the room provides internal access with the first floor of Block D (1.33).

3

Wall

All walls are painted brick apart from the modern partitions which are of a stud construction with plasterboard.

4

Ceiling

The ceiling has four timber beams with painted lath and plaster covering. A small modern coving has been added around the edge of the ceiling.

4

Floor

The floor is covered with modern chip board, whilst within the lobby at the west end the floor has a lino covering.

5

Windows

The southern elevation of the room contains 9 timber sash windows, whilst to the north are 7 multipaned timber sashes

2

Doors

Modern replacement doors are located at the west end of the room from 1.10 and at the northeast corner with 1.33. An original timber panelled door is located at the northwest corner accessing the W.C.s of 1.10.

4

Fixtures and fittings

No fixtures or fittings noted other than windows and doors.

3

Power

No power.

5

Block A - First Floor 6 (18)**1.18****Heating**

Former fireplaces (now blocked) are positioned at both the east and west ends of the room.

4

Discussion and Assessment of Significance**Level: 3**

The modern partitions and removal of works benches and former glazed partition have altered the layout of the space, although apart from that, very little has changed. Few historical fixtures and fitting would have been used within this space.

Management Issues

The space is currently utilised as a music equipment store and rehearsal space. Management of the upkeep of the space is required. Restoration of windows and doors, as well as possible restoration of the original timber floor would add value to the space.



IMG_1742



IMG_1749

Block B - Ground Floor (10B, 9, 14-1, 14-2, 14-2)

1.19



Location

Block B is positioned along the western boundary of the site and 1.19 comprises 6 ground floor rooms which were formerly 8 individual hand forges.

History

Likely constructed during phase 2 between 1880 and 1890, the ground floor originally comprised 8 individual hand forges with open doors and windows fronting the works yard. The hand forges have now all been removed and the spaces used as storage, workshops or offices.

Architectural Elements

Significance

Layout/circulation/access	The range is L-shaped in plan and contains six rooms each accessed individually from the works yard. The south-westernmost two rooms were originally four hand forge rooms, but two dividing partitions have been removed.	2
Wall	All but one had painted brickwork. The exception (14-2) has modern finished plasterboarding throughout.	3
Ceiling	Shuttered concrete. 14-2 has a modern covering.	3
Floor	Concrete throughout.	3
Windows	Originally the window openings were open, although in the early 20th century timber casement windows and stable doors were added into the openings. Of these, three historic windows are retained: one at the south-easternmost room, one at the northernmost room and one within the larger angled room in the middle. The remainder are modern replacements.	2
Doors	Originally no doors were present, but in the early 20th century timber stable doors were added. Of these four stable doors have been retained. The remainder are modern replacements.	2
Fixtures and fittings	No historic fixtures and fittings have been retained within the former hand forges.	5
Power	No power.	5
Heating	The hand forge hearths and flues have been removed. Scars in the ceiling and walls indicate their former positions.	3

Block B - Ground Floor (10B, 9, 14-1, 14-2, 14-2)**1.19****Discussion and Assessment of Significance****Level: 2**

Highly significant spaces, although the removal of two for the partitions and all of the hearths has reduced their significance

Management Issues

The rooms are currently used as workshop stores. All have electricity, but there is no heating in any of the rooms. Some damp issues are apparent.



IMG_0872



IMG_0875



IMG_0918



IMG_0924



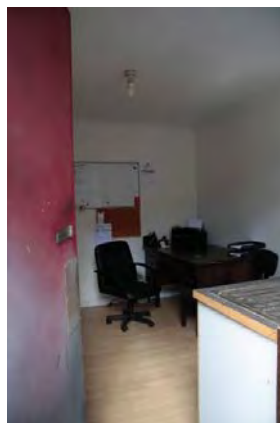
IMG_0927



IMG_1448

Block B - Ground Floor (10B, 9, 14-1, 14-2, 14-2)**1.19**

IMG_1452



IMG_1455



IMG_1480



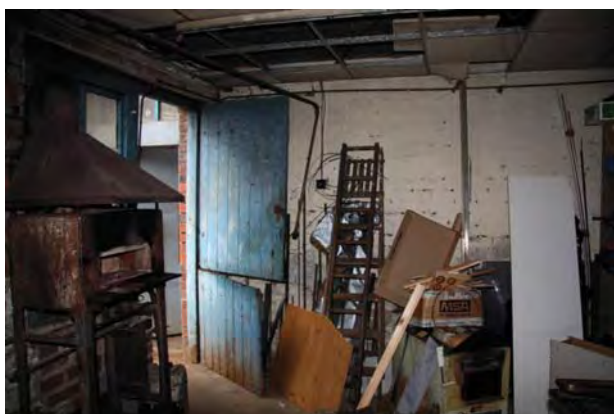
IMG_1486



IMG_1695



IMG_2083



IMG_2086



IMG_2095

Block B - First and Second Floor (23, 34-1, 34-2)

1.20



Location

Positioned on the first and second floors of Block B, the phase 2 western range of the works, overlooking the works yard.

History

This range was constructed during phase 2, between 1880 and 1890. The first and second floors both originally comprised two rooms, although modern partitions have been added on both levels subdividing them further.

Architectural Elements

Significance

Layout/circulation/access

Both the first and second floors are accessed either from 1.13 to the southwest or via an external staircase at the north end of the range. Each floor originally had two rooms, however the first floors northern room has been divided into two by a modern partition. A small understair cupboard is also located within the south-western corner of the floor. The second floor contains a small W.C in the southeast corner, whilst the northern room has also been subdivided creating a central small room, between two larger rooms.

3

Wall

Both floors have painted brick walls and the modern partitions are boarded studs. Water ingress from the roof has caused some damp to the walls.

4

Ceiling

Both floors have painted lath and plaster ceilings. Water ingress is apparent on the second floor.

4

Floor

The first floor has a concrete floor with lino covering. The second floor has a carpet and boards covering timber floor boards.

5

Windows

All are timber casement windows overlooking the works yard. Some panes have been replaced in places.

2

Doors

Original doors are present within each floors northern entrance, with that serving the first floor being a timber sliding door. Within a former window opening on the second floor a taking door has been inserted with timber double doors. The floors entrances from 1.13 to the southwest have modern doors within former window openings.

3

Block B - First and Second Floor (23, 34-1, 34-2)**1.20**

Fixtures and fittings	Leading from the inserted second floor taking-in door was a 20th century hoist. Within the northeast corner of the northern room of the second floor is a large ceramic sink. The first floor contained work benches along the south-eastern wall of the southern room, part of which may have been primary.	4
Power	No power.	5
Heating	The first floor contains blocked flues within the chimney breasts along the western wall, however the second floor appears to have only one possible small blocked flue within one of these in the northern room, suggesting the second floor was not originally heated.	4

Discussion and Assessment of Significance**Level: 3**

These spaces functioned as workshops carrying out a function which did not require the use of powered machinery, and the second floor was not heated. The spaces have undergone little alteration.

Management Issues

The first floor is currently used as a workshop whilst the second floor is used by artists and musicians and both are well maintained and need little management. Priority would be to make good the roof, preventing any further water damage.



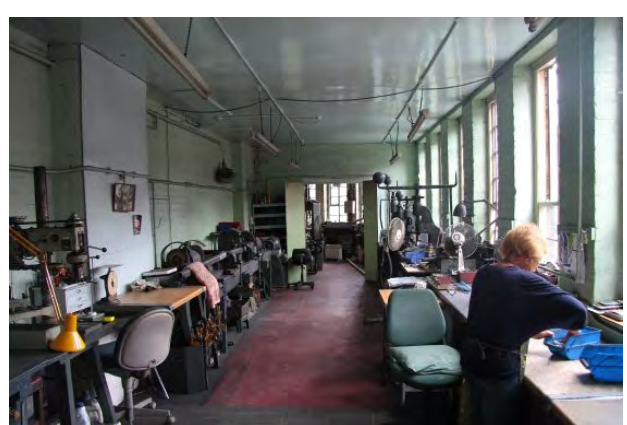
IMG_1458



IMG_1460



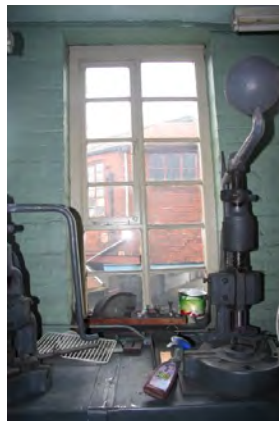
IMG_1470



IMG_1954

Block B - First and Second Floor (23, 34-1, 34-2)**1.20**

IMG_1956



IMG_1961



IMG_1962



IMG_1963



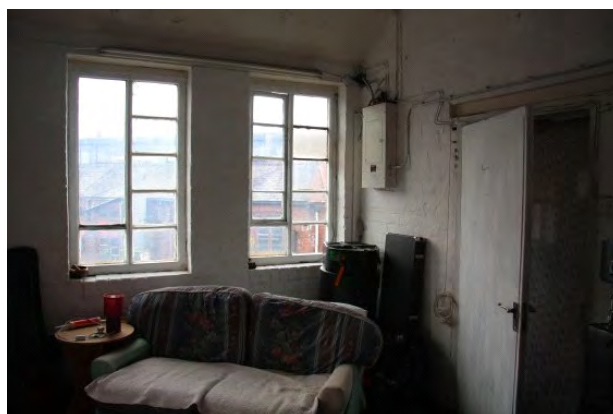
IMG_1968



IMG_2041



IMG_2044



IMG_2059

Block B - First and Second Floor (23, 34-1, 34-2)

1.20



IMG_2061



IMG_2140



IMG_2143



IMG_2147

Block C - Ground Floor 1 (6C.1)**1.21**

Location Positioned within the centre of the ground floor of the rear range, Block C.

History

This dates to the primary construction of the works, phase 1 and was likely originally the engine house.

Architectural Elements**Significance**

Layout/circulation/access	This is a single room, rectangular in plan. Originally this was part of a central range which ran north-south from and part of the central Block G. This was altered and truncated creating a yard passageway between the two blocks. 1.21 was then accessed via a doorway within the south elevation, although this has since been blocked internally and is accessed from the adjacent room to the east (1.22).	2
Wall	All walls are painted brick, with the exception of painted blockwork of the internal south wall.	4
Ceiling	The ceiling is painted brick jack arches running east-west. Large chains and loops are present either side of the jack arch beams.	2
Floor	Concrete floor throughout.	4
Windows	Two window openings are present within the south wall externally, whilst the north wall contains two blocked windows and a blocked doorway within a further two former windows.	4
Doors	A former doorway is present externally within the south wall. The north wall contains a blocked doorway which had been inserted across two former window openings.	4
Fixtures and fittings	The east and west walls of the room contain high wall boxes for the transfer of power to/from the adjacent rooms. Within the west wall are two very large cast iron bearing boxes also for the transfer of power. Large chains and lops are present either side of the jack arch beams in the ceiling. Four high vent openings are also located within the north wall.	2

Block C - Ground Floor 1 (6C.1)**1.21**

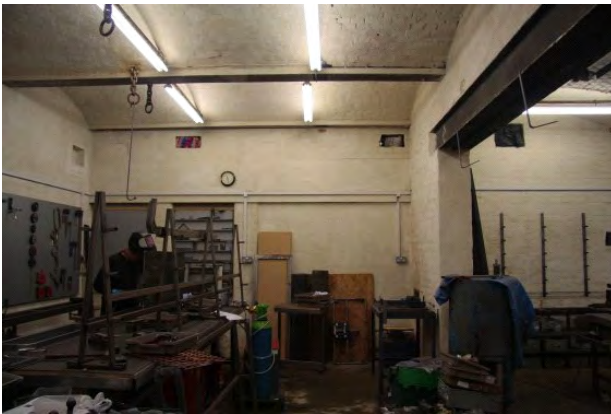
Power	This room was originally the power source with wall boxes at various heights and of various sizes in the east and west walls for the transmission of power to the adjoining rooms.	2
Heating	No heating.	5

Discussion and Assessment of Significance**Level: 2**

Highly significant space once housing the power source. The retained cast iron bearing wall boxes are of specific significance along with the jack-arched ceiling.

Management Issues

The room is currently used as a workshop and is well maintained. The south wall and openings within it are in need of some attention. The upkeep and retention of the large cast iron bearing boxes in the east wall is of the most importance.



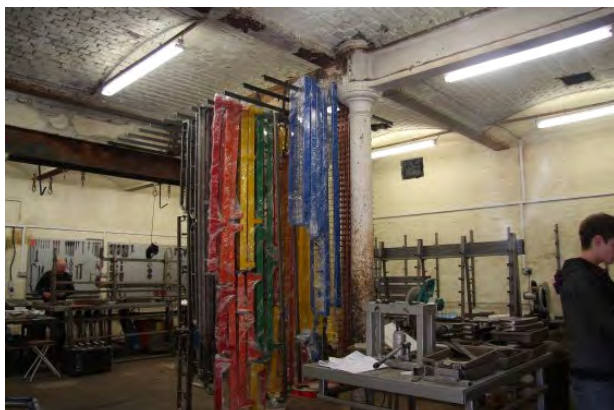
IMG_1115



IMG_1119



IMG_1138

Block C - Ground Floor 2 (6C.2, 7C)**1.22**

Location Positioned on the ground floor of the rear range of the work, Block C, and flanking either side of 1.21 are two rooms.

History

Contemporary with the construction of the works during phase 1, these two rooms flanking the central Engine House (1.21) were used for grinding. The jack-arched ceilings however appear to have been a later insertion, questioning whether the central section of this block was originally single storey with the outer eastern and westernmost ground floor rooms and first and second floors added/adapted later.

Architectural Elements**Significance**

Layout/circulation/access	These are two rooms, rectangular in plan, flanking either side of 1.21. Access for each is gained via widened openings within the south elevation. Each room is also accessed from 1.21 by inserted openings.	3
Wall	All walls are painted brick.	4
Ceiling	The ceilings of both rooms are made up of jack arches. However, these do not line up with the supporting brick piers between the window openings within the south wall. The jack arch beams are carried on cast iron beams which are in turn supported by cast iron columns. These columns are in line with the structural piers of the south wall, with the cast iron beam between the two needed to carry the off-centre jack arch beams. Some belting slots are located within the centre of some of the jack-arches.	2
Floor	The floor is concrete throughout.	4
Windows	The western room contains three windows within the south elevation. A further window was originally positioned within the wall, but this has been lost to a widened doorway. Two window openings are retained within the eastern room, with a further two original openings incorporated into a widened doorway.	3
Doors	Both original doorway openings have been substantially widened, incorporating former window openings. Internally the doorways are inserted openings.	5

Block C - Ground Floor 2 (6C.2, 7C)**1.22**

Fixtures and fittings	Wall boxes and belting slots are present throughout each room. In addition, very large cast iron transmission boxes are located within the east wall of the western room, previously discussed in 1.21, transferring power between the rooms. High vents are present within the north wall of the rooms, highly indicative of former grinding shops. These vents, although blocked internally have retained their iron bars externally.	2
Power	Power was present in both rooms, indicated by the numerous wall boxes.	2
Heating	No heating	5

Discussion and Assessment of Significance**Level: 2**

Highly significant area with numerous original fixtures and fittings relating the space to its original function. The possible inserted jack-arches also point to a new possible theory relating to the construction and phasing of the range.

Management Issues

The rooms are currently used as a workshop and are fairly well maintained. Structural problems are evident due to the off centred jack-arches which are not properly distributing the weight of the upper floors to the piers of the south wall. This is also exacerbated by the shallow foundations of the south wall. This structural problem is a priority for future management. Historical fixtures and fittings should be retained.



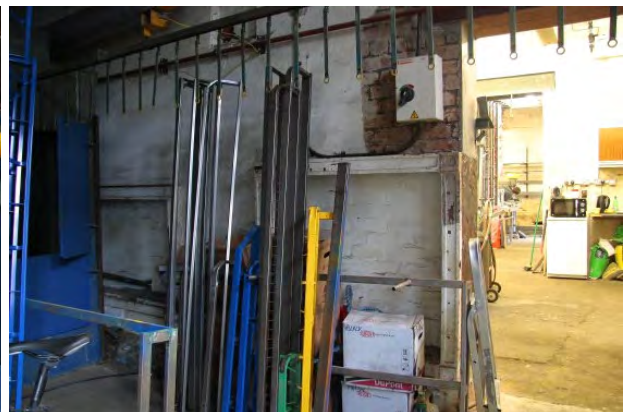
IMG_1097



IMG_1110



IMG_1120



IMG_1124



Block C - Ground Floor 2 (6C.2, 7C)

1.22



IMG_1127



IMG_1129



IMG_1131



IMG_1135

Block C - Ground Floor 3 (8C-2, 5)

1.23



Location These are two rooms flanking 1.22, on the ground floor of the rear range, Block C.

History

Contemporary with 1.21 and 1.22, and with the phase 1 construction of the works, although as with 1.22, the off-centre jack-arch ceilings may be a later insert. By 1908, both rooms contained gas engines, powering the range. These have since been removed.

Architectural Elements

Significance

Layout/circulation/access	Both are individual rectangular rooms in plan, with single access to each via a doorway within the south wall from the works yard. There was no access to the eastern room at the time of survey, so any retained internal features are unknown. The western room contained a blocked doorway to the north. No internal access to adjacent rooms was noted.	2
Wall	The majority of the walls were covered with material, although at the southern end of the room timber matchboard coverings have been retained.	2
Ceiling	The ceiling is largely covered with material, however at the southern end of the room timber match boarding has been retained. Above this it is presumed that the ceiling is jack-arched.	2
Floor	The floor is concrete, and covered by carpet.	4
Windows	Two windows are retained within the south wall with historic frames and multi-panes, dating from at least 1908.	2
Doors	Both doors are modern.	5
Fixtures and fittings	Historic fixtures and fittings include the timber matchboarding, overhead RSJ running east-west across the room and historic windows. An original supporting cast iron column has been removed previously and a brick pier added to the east wall.	2
Power	These rooms contained the source of the power for the range.	2
Heating	No heating.	5

Block C - Ground Floor 3 (8C-2, 5)**1.23****Discussion and Assessment of Significance****Level: 2**

This space is fairly significant having once housed a gas engine. The presence of the matchboarding and historic windows are of high significance.

Management Issues

The western room is currently used as a store and music rehearsal room. The retained matchboarding and historic windows are key features. Further historic features may be present behind the material coverings of the walls and ceiling.



IMG_1302



IMG_1943

Block C - Ground Floor 4 (8C-1, 4)**1.24****Location**

Located at the eastern and westernmost ends of the ground floor of the rear range, Block C.

History

Currently unconfirmed phase of construction, due to possible inserted and differing design of jack-arches within the adjacent 1.23, and position of external staircase at north end of eastern range (Block D). Certainly constructed in the late 19th century and contemporary with the upper floors of the range. The western room was originally the works maintenance shop and the eastern room, although used for grinding in the early 20th century may not have been originally constructed for grinding, suggested by the lack of high vents within the north wall - a key feature.

Architectural Elements**Significance****Layout/circulation/access**

Both rooms are rectangular in plan and accessed from doorways within the south wall and are not internally connected with the remainder of the range. The eastern room has modern inserted partitions subdividing the space, and a single-storey one room addition attached to the north and accessed via an inserted doorway. The north wall of this addition is the southern wall of the adjacent works and contains blocked doorways which would have at one time linked the two works. The western room has a small storage space and sink unit beneath the later external staircase attached to the south of the range.

3

Wall

All walls are painted brick.

3

Ceiling

Jack-arch ceilings supported by cast iron columns which are constructed fully in line with the structural piers of the south wall of the building. Belting slots are also positioned within the ceilings.

2

Floor

Concrete throughout. The eastern room also has a raised timber floor over the concrete.

4

Windows

Three windows are present within the south wall of each room, all with secondary windows, although the original frames present within the eastern room contain empty sockets for former bars. Doorways have been inserted within former window openings.

2

Block C - Ground Floor 4 (8C-1, 4)**1.24**

Doors	No original doors have been retained. Original openings were at the outer bays of the south wall of the rooms. Both rooms have two inserted doorways within the south elevation.	4
Fixtures and fittings	Wall boxes are positioned within the east wall of the western room, and belting slots within the ceiling of both rooms.	2
Power	The presence of wall boxes within the east wall of the western room are indicative of power. Features associated with power were few within the eastern room, with only a belting slot in the ceiling observed.	2
Heating	No heating within the eastern room. The western room contained a single blocked fireplace/hearth within the northwest corner of the room.	3

Discussion and Assessment of Significance**Level: 3**

The significance of the spaces has been reduced by the alterations to the south elevations, and by inserted modern partitions within the eastern room. The historic wall boxes, belting slots and primary window frames are significant features indicating function.

Management Issues

The eastern room is currently used as a silver plating shop, and the western room as a joiners shop. Both are well maintained internally, however the south elevations of each have undergone substantial alterations with large inserted openings changing the external appearance and significance of the works. Modern doors and roller shutters detract from the original character of the works.



IMG_0863

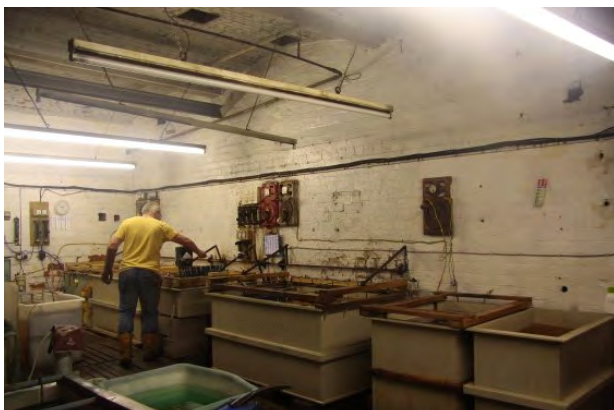


IMG_0866



Block C - Ground Floor 4 (8C-1, 4)

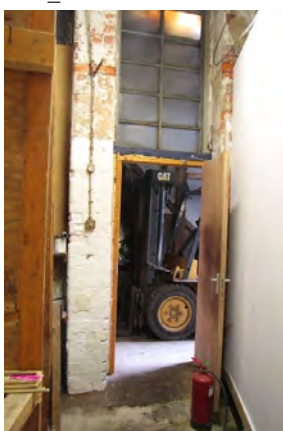
1.24



IMG_0943



IMG_0947



IMG_0949



IMG_0952

**Block C - First Floor 1 (21)****1.25**

Location Positioned within the centre of the first floor of the rear range, Block C, directly above 1.21.

History

Unconfirmed phase of construction. Either phase 1 or 2 and contemporary with the remainder of the first floor of the range.

Architectural Elements**Significance****Layout/circulation/access**

A single room rectangular in plan accessed via an inserted doorway in a former window opening within the south elevation. An inserted door in the west wall also links with the adjacent 1.26. No access at the time of survey so the original entrance into the room is currently unknown.

2

Wall

Unknown

Ceiling

Unknown

Floor

Unknown, but assumed concrete.

Windows

Fenestration serving the room is located within the south elevation only and comprises three windows with timber casements.

3

Doors

The main door within the south wall is inserted within a former window opening and contains a secondary door. The west wall contains a timber batten door within an inserted opening.

3

Fixtures and fittings

Unknown.

Power

Unknown.

Heating

Unknown.

Discussion and Assessment of Significance**Level: 2**

Unknown.

Management Issues

Unknown.

Block C - First Floor 2 (22)

1.26



Location Located at the west end of the first floor of the rear range, Block C

History

Unconfirmed phase of construction. Either phase 1 or 2 and contemporary with the remainder of the first floor of the range and 1.24 below. The space originally carried out unpowered tasks.

Architectural Elements

Significance

Layout/circulation/access	This comprises two large rooms, rectangular in plan, accessed via an external staircase at the southwest corner. Two small offices spaces have been inserted long the south side of the west room, at the southwest corner is a partitioned off staircase leading from the external staircase to the second floor above (1.28). The dividing wall between the former two rooms has been largely removed and the space opened up into one large workshop. The floor above the west room is carried on a longitudinal timber beam supported by cast iron columns. The eastern room was originally the same, but after a fire destroyed the central section of the second floor above, the roof structure has been altered and is now supported by two primary cast iron columns and inserted RSJs, with central inserted skylight.	3
Wall	All main walls are painted brick. The staircase partition at the southwest corner is painted matchboarding.	4
Ceiling	Painted lath and plaster and painted shuttered concrete.	4
Floor	Concrete throughout.	4
Windows	The south and north walls contain extensive fenestration, all of which have windows with timber casements. The side of the window which the casement is positioned is to the east within the western room, but to the west in the eastern room. All those in the south elevation have casements to the west.	3
Doors	Original doors are retained along with barred overlights within the south elevation at the west corner leading from the external staircase. The westernmost door leads to the second floor above, whilst that within the second bay leads directly into 1.26. The east wall of the east room has an inserted opening leading to 1.25, with timber batten door.	2

Block C - First Floor 2 (22)**1.26**

Fixtures and fittings	Few retained. These largely comprise columns, windows and doors previously discussed.	3
Power	Non observed.	5
Heating	At least five blocked fireplaces/hearths.	3

Discussion and Assessment of Significance**Level: 3**

The space is significant in that it contains an abundance of fenestration to the north and south indicative of former function, along with original columns, and staircase at the west end. The space however has undergone changes in layout, the eastern room has a secondary roof and no original work benches have been retained.

Management Issues

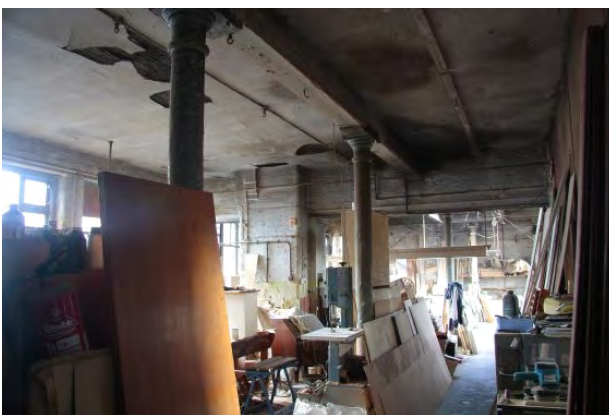
The space is currently is use a joiners workshop with work benches, materials and power tools throughout. Window and skylight maintenance is likely required due to water ingress, but little other immediate management is needed.



IMG_1473



IMG_1526



IMG_1535



IMG_1539



Block C - First Floor 2 (22)

1.26



IMG_1542



IMG_1548

Block C - First Floor 3 (20)

1.27



Location

Located at the eastern end of the first floor of the rear range, Block C.

History

Unconfirmed phase of construction. Either phase 1 or 2 and contemporary with the remainder of the first floor of the range and 1.24 below. The two rooms making up 1.27 were originally grinding shops.

Architectural Elements

Significance

Layout/circulation/access

The space comprises two rooms, rectangular in plan, accessed from doorways in the south elevation, and internally linked by an altered doorway in the dividing wall. The eastern room contains three cast iron columns carrying a timber beam supporting the floor above. A partitioned staircase is located at the southeast corner accessed via the external staircase and easternmost doorway at the southeast corner. The western room, accessed from an inserted doorway via a secondary external staircase from the roof of the central range (Block G), contains a secondary roof (same as eastern room of 1.26) with skylight, and inserted W.C. in the southwest corner.

3

Wall

Painted brick with some areas of painted plaster visible in the eastern room. The western room has painted plastered walls.

4

Ceiling

Painted lath and plaster in the eastern room and painted shuttered concrete in the western room.

4

Floor

Concrete throughout.

4

Windows

11 timber framed windows within the south elevation, all secondary frames.

4

Doors

At the east end of the south elevation are original timber batten doors. The original timber frames of the overlights have been retained, although the original bars have been removed and replaced with secondary windows. The western room contains an inserted door and a primary taking-in door.

3

Fixtures and fittings

The eastern room contains high vents and blocked arched openings within the north wall, possible blocked wall boxes in the west wall and probable brackets attached to the ceiling. The western room contains high vents in the north wall, and a hoist above the taking-in door in the south elevation.

3

Block C - First Floor 3 (20)**1.27**

Power	The presence of blocked wall boxes is indicative of power.	3
Heating	No heating	5

Discussion and Assessment of Significance**Level: 3**

The general layout of the space has remained unaltered and some features relating to the space's function as a grinding shop have been retained. The western room however has undergone substantial alterations to the roof following on from fire damage.

Management Issues

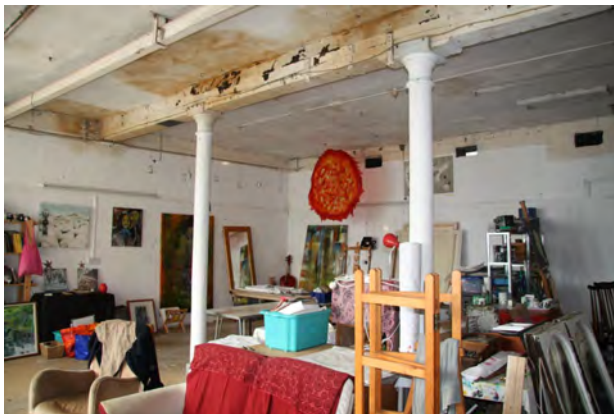
The space is currently used by artists. The skylight within the western room is in need of maintenance and all fenestration needs to be addressed.



IMG_1282



IMG_1592



IMG_1600

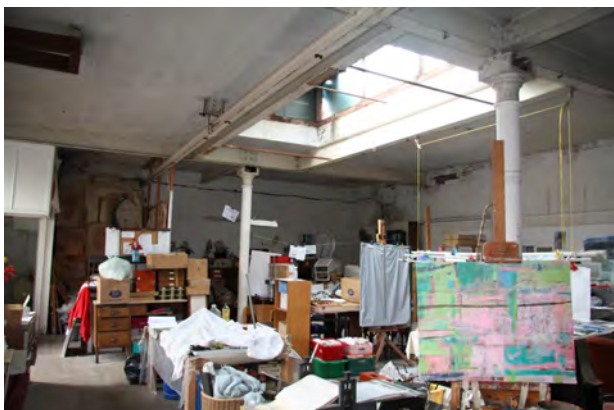


IMG_1608



Block C - First Floor 3 (20)

1.27



IMG_1612



IMG_1614



IMG_1623



IMG_1638

**Block C - Second Floor 1 (31, 32, 33)****1.28****Location**

Positioned at the eastern and western ends of the second floor of the rear range, Block C. The remainder of the former second floor between the two spaces was previously removed due to fire damage.

History

Unconfirmed phase of construction. Either phase 1 or 2 and contemporary with the first floor of the range and 1.26 and 1.27 below.

Architectural Elements**Significance****Layout/circulation/access**

Two opposing rooms, at either end of the range, each accessed via the roof of the removed section of second floor or via external staircases and primary doorways in the south elevation of the first floor. Internal access into the rooms was not available at the time of survey.

3**Wall**

Unknown

Ceiling

Unknown

Floor

Unknown

Windows

Both rooms have seven bays of fenestration within the north and south elevations, all with timber casement windows.

3**Doors**

Original doors are positioned within the primary openings of the first floor south elevations. Modern doors have been fitted within the primary openings leading from the first floor roof.

2**Fixtures and fittings**

Unknown.

Power

Unknown.

Heating

Unknown, but most likely.

Discussion and Assessment of Significance**Level: 3**

Not fully known, however their significance has been diminished by the loss of the remaining second floor of the range.

Management Issues



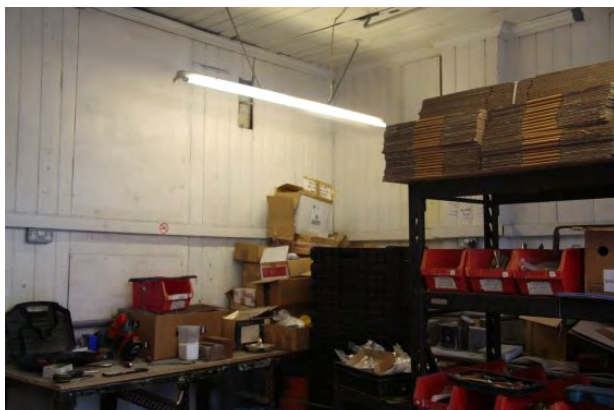
Block C - Second Floor 1 (31, 32, 33)

1.28

Fenestraion and water ingress are likely the priority issues.

Block D - Ground Floor 1 (3-1)

1.29



Location Located at the north end of the ground floor of the east range, Block D.

History

This was constructed during phase 1 of the building of the works and is contemporary with the remainder of the range. Its original function is unknown however by 1908 the room housed a gas engine, the same as that within 1.23 of the north range.

Architectural Elements

Significance

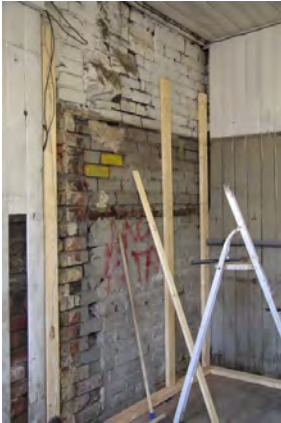
Layout/circulation/access	A single square room in plan, with angled doorway to the adjacent room (1.30) at the southwest corner. Access to the room is from a primary doorway opening in the west wall directly from the works yard.	3
Wall	The walls have a painted matchboarding dating at least to when the room housed the gas engine (1908). Some areas of this have been replaced with modern plasterboarding.	2
Ceiling	The ceiling is covered with painted matchboarding the same as the walls.	2
Floor	Concrete throughout.	3
Windows	The west wall contains two windows each with replacement timber frames. The north wall contains a blocked window which has been truncated by the external staircase attached and keyed-in to the north wall.	3
Doors	A primary doorway in the west wall contains a replacement door, and within the southeast corner a doorway within an angled brick partition linked to 1.30 to the south.	4
Fixtures and fittings	An overhead RSJ runs centrally across the room east to west.	2
Power	The room housed the source of the power for the east range of the works, Block D.	2
Heating	No heating	5

Block D - Ground Floor 1 (3-1)**1.29****Discussion and Assessment of Significance****Level: 2**

Highly significant space indicating function and phasing, although with limited fixtures and fittings retained.

Management Issues

The room is currently used as a store. The matchboarding needs to be maintained and replaced with suitable material in honest repairs.



IMG_0965

Block D - Ground Floor 2 (3-2)

1.30



Location Positioned on the ground floor of the east range, Block D, to the south of 1.29.

History

This was constructed during phase 1 of the building of the works and is contemporary with the remainder of the range. Its original function was likely polishing.

Architectural Elements

Significance

Layout/circulation/access	The space was a single room, square in plan, with altered doorway to the north accessing 1.29. To the south, an opening which had linked with 1.31 to the south had been enlarged and blocked. The principal access to the space was via a large inserted opening in the west wall with modern roller shutter door, directly from the works yard.	3
Wall	All walls are painted brick or blockwork	4
Ceiling	The ceiling comprises painted lath and plaster. Some areas of plaster are missing, exposing the laths beneath.	4
Floor	Modern concrete throughout.	4
Windows	Two window openings have been retained in the west wall both with replacement windows. A further two windows would have originally served the space, but these were lost when the large opening in the west wall was inserted.	4
Doors	No primary doors have been retained. To the north a modern timber door is located within the angled later partition with 1.29, a blocked door is positioned in the west wall at the north end of the room, whilst adjacent to this is the large roller shutter doorway.	5
Fixtures and fittings	Positioned overhead at the eastern side of the room, carried on brick piers against the north and south walls, was an RSJ structure. To the east of this within the north and south walls were retained wall boxes.	3

Block D - Ground Floor 2 (3-2)**1.30**

Power	This was a powered room, with power having been transferred directly from the adjacent 1.29 to the north via two wall boxes in the north and south walls.	2
Heating	Positioned within the south wall of the room was a brick flue/hearth although the lower section has been removed and the upper is supported by inserted RSJs.	3

Discussion and Assessment of Significance**Level: 4**

The room has some important fixtures and fittings in the form of wall boxes and RSJs, however the room had undergone numerous layout/access changes and has had part of the hearth removed, affecting the significance of the space.

Management Issues

The room is currently used as a store. Retention of any historical fixtures and fittings is needed, whilst also making good the chimney stack as a priority.



IMG_2111



IMG_2117



IMG_2120



IMG_2123

Block D - Ground Floor 3 (2-1)**1.31****Location**

This space is positioned to the south of 1.30 within the ground floor of the east range, Block D.

History

This was constructed during phase 1 of the building of the works and is contemporary with the remainder of the range.

Architectural Elements**Significance****Layout/circulation/access**

This was originally a single room, but has been subdivided with modern stud partitions to create a small second room. An opening to the north with 1.30 has been blocked, as too has one to the south with 1.32. A second door within the south wall had been retained but was blocked by furniture. Access to the room was via an inserted doorway within a former window opening within the west wall from the works yard.

4

Wall

The main walls are all painted brick or blockwork with inserted stud partitions with plasterboard.

5

Ceiling

Painted lath and plaster.

4

Floor

The floor has remains of sections of timber floorboards interspersed with concrete surfaces. The concreted areas may indicate the former positions of machinery.

4

Windows

The west wall contains three primary window openings all with replacement windows.

5

Doors

A modern UPVC door was positioned within the inserted doorway in the west wall. A door at the east end of the south wall had also been retained but was covered/blocked by furniture.

5

Fixtures and fittings

Very few fixtures and fittings have been retained within the space, other than three overhead RSJs running east-west across the room.

5

Power

The room originally had power, although the retained wall boxes are not visible within the room.

5

Block D - Ground Floor 3 (2-1)**1.31****Heating**

Positioned against the east wall in the southeast corner of the room is a brick hearth/flue. It was not possible to see if this was originally open within the room

4

Discussion and Assessment of Significance**Level: 4**

The room has undergone significant changes with access/layout and few primary fixtures and fittings have been retained.

Management Issues

The room is currently used as a workshop and retains very few original features in need of specific management. Priority would be the fenestration and door within the west elevation.



IMG_0978



IMG_0982

Block D - Ground Floor 4 (2-2)

1.32



Location These two rooms were located on the ground floor at the southern end of the eastern range, Block D, and attached to the north of the front range, Block A.

History

This was constructed during phase 1 of the building of the works and is contemporary with the remainder of the range.

Architectural Elements

Significance

Layout/circulation/access

The space comprises two rooms set at different floor levels. The northernmost room was a small rectangular room at the same floor level as the remainder of the ground floor of the range to the north. This was accessed from the room to the south which had a higher floor level (the same as the principal front range to the south, Block A). A brick wall divided the two rooms, with doorway and brick and concrete steps linking the two. A door and blocked door within the north wall of the northern room originally accessed 1.31 to the north. The southern room, accessed via a doorway in the west wall, inserted within a former window opening, was trapezoidal in plan and originally connected with 1.11 of the front range via a now blocked doorway. Basement room 1.4 is also located directly beneath this room.

3

Wall

The walls were all painted brick.

4

Ceiling

Both rooms had painted lath and plaster ceilings with some modern boarding covering holes.

4

Floor

The floors were covered with chipboard throughout.

5

Windows

The northernmost room contained two primary window openings with partial replacement frames, whilst the southern room contained four primary window openings to the west each having retained their timber casement windows. The inserted doorway within the former window opening had retained the upper section of its original window frame, serving as an overlight.

3

Block D - Ground Floor 4 (2-2)**1.32**

Doors	A modern door was positioned within the inserted opening in the west wall, whilst a timber door was located in the north wall of the north room, once accessing 1.31. All other doorways had been blocked.	5
Fixtures and fittings	Positioned overhead running from the north wall of the northern room to the second bay of the southern room was a section of retained lineshafting with drive shaft, wheel, large cast iron ceiling bracket and two wall boxes.	2
Power	The space was powered and had retained a section of lineshafting with drive shaft, wheel, large cast iron ceiling bracket and two wall boxes. At the southern end of the section of the lineshafting it would appear that it was transferred down to 1.4 below and possibly also up to 1.33 above.	2
Heating	No apparent heating, but within the southeast corner of the northern room is a brick flue with relieving arch. This probably only supported a hearth/fireplace in 1.33 above. It was not possible to see whether this flue was ever open within the room.	4

Discussion and Assessment of Significance**Level: 3**

Although access to the space has been altered, the general layout and retained features mean that the space is of high significance.

Management Issues

The space is currently used as a music rehearsal room. Certainly important features such as the retained lineshafting need to be maintained and left in situ. Priorities would be maintenance of the fenestration and doors within the west elevation.



IMG_1142



IMG_1147



Block D - Ground Floor 4 (2-2)

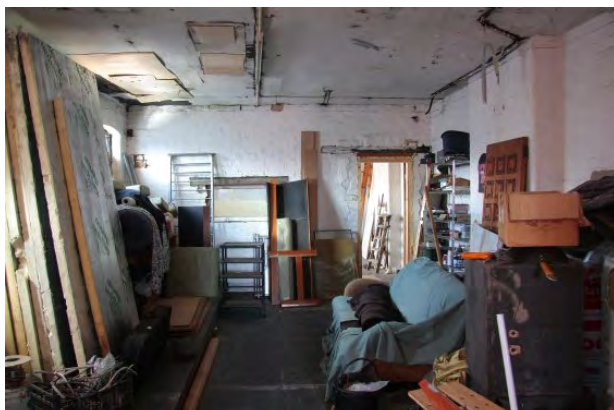
1.32



IMG_1158

Block D - First and Second Floors (19,29,30)

1.33



Location The first and second floors of the east range, Block D, of the works.

History

This was constructed during phase 1 of the building of the works and is contemporary with the remainder of the range. The first and second floors were originally cutlers workshops.

Architectural Elements

Significance

Layout/circulation/access	Both floors have essentially the same layout with a separate circulation and entrance at the north end of the ranges, accessed by the external stone staircase from the works yard. The first floor has additional access from the principal front range, Block A (1.18). The northern half of each floor contains a corridor along the eastern side of the range with two rooms accessed off it to the west. The first floor has an additional modern inserted room. The southern end of each floor contains two interconnecting rooms. The layout of the floors indicate that the west side of the floors originally had work benches below the fenestration and overhead lineshafting, with separate rooms at the north end for independent Little Mesters.	2
Wall	The walls have a mixture of painted brick, plaster, blockwork, plasterboard and timber cladding.	5
Ceiling	Painted lath and plaster with exposed timber beams on the second floor.	4
Floor	Both floors comprised largely covered timber floor boards.	5
Windows	Each floor has 19 windows within the west wall overlooking the works yard. Some original timber casements have been retained in full whilst others have partial retention, or have been fully replaced. The second floor has a further three windows in the south wall, although all are covered internally and there is a single window in the north wall serving the stairwell.	2

Block D - First and Second Floors (19,29,30)**1.33**

Doors	Two original doors have been retained on the first floor: one leading from the external staircase at the north end, whilst the other is a timber rolling door accessing the northernmost room from the corridor. The remainder of the doors are primary openings (with the exception of the second floor doorway at the south end of the corridor) with modern replacement doors.	4
Fixtures and fittings	Few have been retained, with the exception of wall boxes and associated bracket positioned overhead along the west side of the range.	3
Power	Wall boxes indicate the presence of former power on the floors. It's transmission to/from the floors below is unknown.	2
Heating	Blocked hearths/fireplaces in each room on both floors.	4

Discussion and Assessment of Significance**Level: 3**

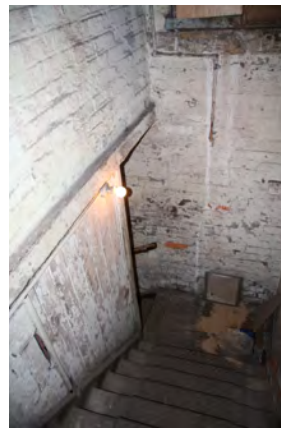
The layout and presence of power associated features is of high significance, along with the small primary stairwell at the north end of the range. The modern finishes and inserted walls etc. detract from this however.

Management Issues

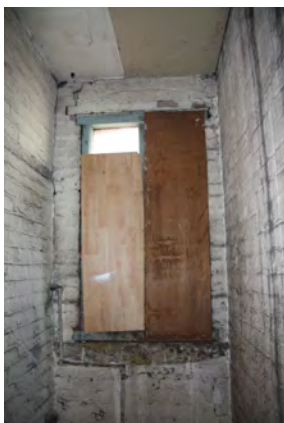
The spaces have a mish-mash of decors. The second floor in addition has areas of pigeon guano which needs to be addressed. The first floor is currently used as a band/music rehearsal/studio whilst the second floor is not currently in use. Fenestration and access is a primary issue to be addressed.



IMG_1645



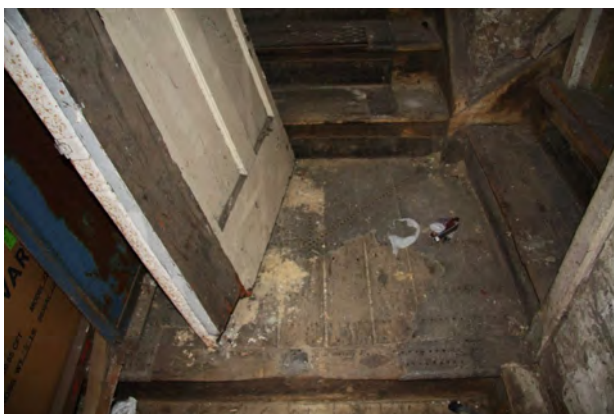
IMG_1647

Block D - First and Second Floors (19,29,30)**1.33**

IMG_1648



IMG_1649



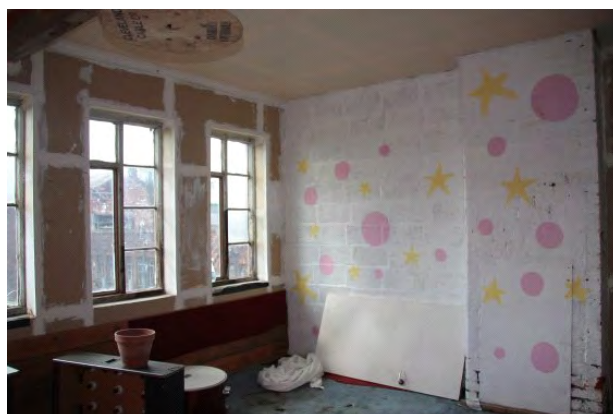
IMG_1654



IMG_1656



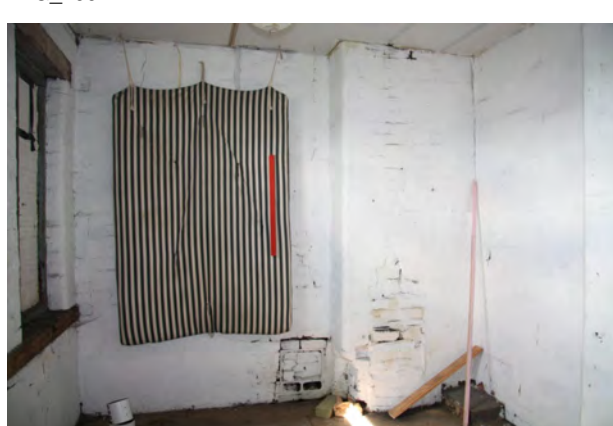
IMG_1658



IMG_1667



IMG_1671



IMG_1675

Block D - First and Second Floors (19,29,30)

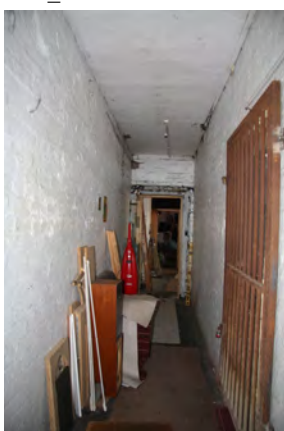
1.33



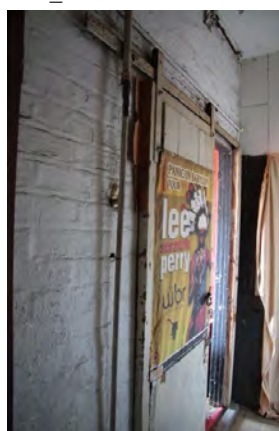
IMG_1756



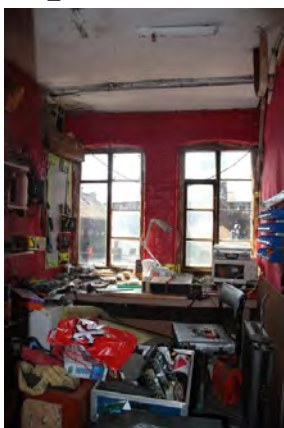
IMG_1760



IMG_1767



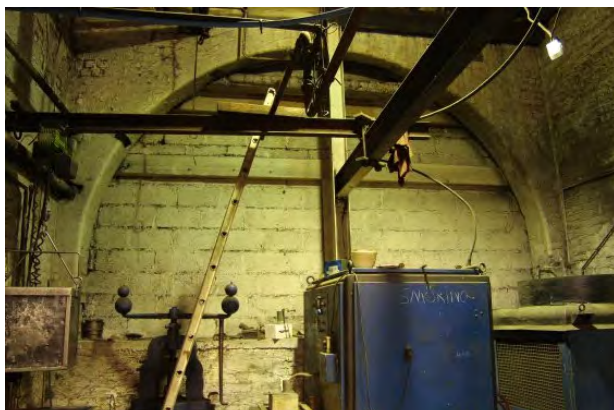
IMG_1770



IMG_1773

Block G - Ground Floor 1 (17-1)

1.34



Location

Positioned within the northern half of the central range, Block G, in the centre of the works yard, 1.34 comprises the central and western bays.

History

This northern half of the range dates to the phase 1 construction of the works. There have been various changes/alterations and damage due to fire within both bays. The central bay is depicted on historic mapping as having been originally attached to the south side of the northern range (1.21), since altered however. A later phase 4 two-storey section was added to the south of the range whilst the eastern bay was widened. The range was originally constructed as a power forge with the east and west bays having individual hand forges. Usage, unusually and significantly continues to be similar.

Architectural Elements

Significance

Layout/circulation/access

The central bay comprises a single room, rectangular in plan with high pitched roof. Principal access into the room was via an inserted doorway in the north wall, with adjacent pedestrian doorway which was blocked by machinery. Inserted doors within the east and west walls provided access to the adjacent eastern and western bays. The west bay comprised three rooms which had individual access from the works yard to the west. Inserted doorways provided internal access between the central room with the southern room and the adjacent central bay.

2

Wall

The central bay had painted brick walls. A large archway opening in the south wall had been blocked with blockwork and painted. The western bay's central and southern room had modern painted plasterboard throughout obscuring the internal fabric of the building. The north room had plain brick walls with some remnants of white paint. The majority of the north and east walls of the room were covered by timber boarding on which was mounted the electricity fuse/switch boxes serving the works.

4

Ceiling

The central bay was open to the roof which was hipped to the north and south and comprised three timber King-Post trusses. Although there had been numerous repairs and replacements within the roof due to fire damage, the principal trusses appeared to be original. Within the western bay the central and southern room had modern plasterboard ceilings, whilst the northern room contained exposed secondary timber purlins supporting the roof. The ends of charred timber purlins were observed projecting from the south wall.

3

**Block G - Ground Floor 1 (17-1)****1.34**

Floor	The floor was concrete throughout both bays, although within the central and southern room of the western bay the floor was covered with modern materials.	4
Windows	The central bay contains a window (secondary) within the north wall which has been blocked. The south wall contains a large arched opening, originally having large timber shutters (removed), which has been blocked with blockwork after the construction of the two-storey addition to the south. The northern room of the western bay contains a former window opening, now blocked. The central and southern rooms however have retained a single window opening within their west walls, adjacent to the doorways, each containing secondary windows.	3
Doors	There are no primary doors retained within the central and western bays. Primary openings are retained within the west wall of the western bay, though all doors are secondary and a former doorway within the north wall of the north room has been blocked. The central bay contained a central inserted doorway within the north wall and an adjacent possibly phase 4 doorway. The doorway in the west wall is an insert with modern door, whilst those in the east wall, one of which is blocked, are also likely to be inserts.	3
Fixtures and fittings	The central bay has retained at least six wall boxes, along with some in situ lineshafting. The arched opening in the south wall, although has had its shutters removed, has retained large hinges. Although not primary, some of the machinery contained within the room is historic and was once run from the retained lineshafting. No fixtures or fittings were observed to have been retained within the western bay.	2
Power	No power was observed within the western bay. The central bay however has retained at least 6 wall boxes with sections of in situ lineshafting	2
Heating	No heating observed, although the western bay would have originally contained hearths (since removed).	5

Discussion and Assessment of Significance**Level: 2**

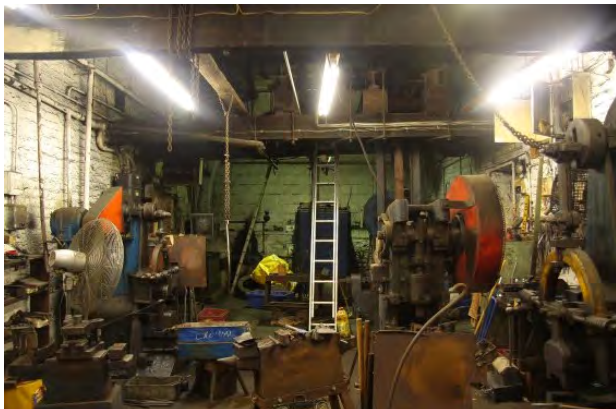
The continuing use of the central bay as a forge/workshop is of high significance along with retained power transmissions in the form of wall boxes and lineshafting.

Management Issues

The space is currently utilised as a forge/manufacturing workshop in the central bay with office and amenities within the central and southern rooms of the western bay. The northern room functions as a meter/switch room. The wall boxes, lineshafting and possibly some machinery within the central bay are of significance and should be retained. Water ingress from the roof is a priority issue.

Block G - Ground Floor 1 (17-1)

1.34



IMG_1039



IMG_1040



IMG_1047



IMG_1063



IMG_1069



IMG_1344



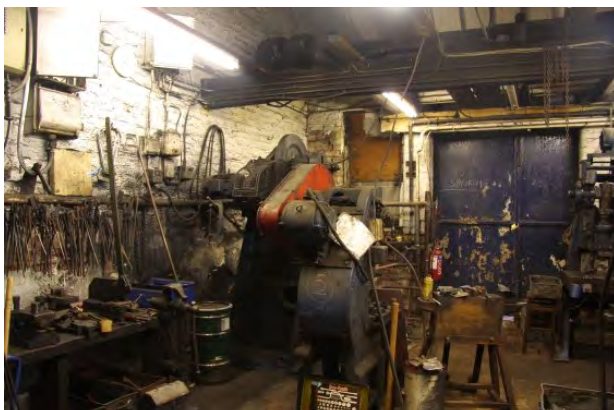
IMG_1349



IMG_1352

Block G - Ground Floor 1 (17-1)

1.34



IMG_1353



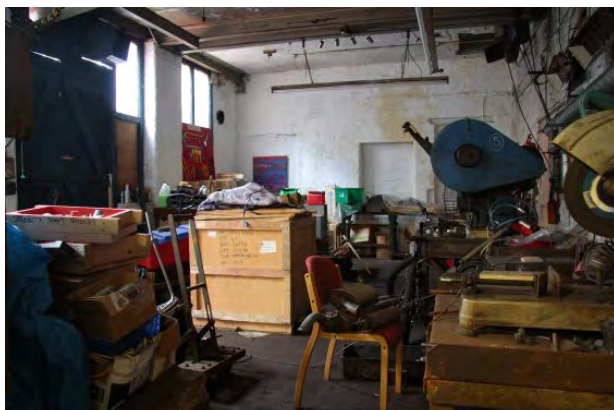
IMG_1361



IMG_1362

Block G - Ground Floor (17-2)

1.35



Location

Positioned at the eastern side of the central range, Block G, comprising the east range of the northern half of the range.

History

A product of two main phases, the original range comprised a row of individual hand forges which have been removed, the range widened and a flat roof constructed during phase 5. The space became one large room, functioning as a workshop.

Architectural Elements

Significance

Layout/circulation/access

1.35 is single room, rectangular in plan with an angled northeast corner. Access was via two doorways in the east wall, one being a pedestrian doorway and the other a widened door. Access to the adjacent 1.34 was via an altered doorway in the west wall. There had been original access with 1.37 to the south, although these doors had been blocked for some time.

4

Wall

All walls are painted brick. The south wall contains blocked original openings and a scar delineating the extent of the phase 1 bay to the east and its former roof line.

4

Ceiling

The ceiling is painted shuttered concrete with four former skylights. Water ingress was observed especially around the former skylights.

4

Floor

The room contained a red brick floor throughout.

4

Windows

The north wall contained an inserted window, whilst the east wall contained two large phase 5 windows and a narrowed window adjacent to the doorway.

4

Doors

A pedestrian door with timber battened door was located at the northern end of the east wall, whilst to the south was a widened doorway with timber double doors. Within the west wall was an altered opening with modern door accessing 1.34. All other former doorways had been blocked.

4

Block G - Ground Floor (17-2)**1.35****Fixtures and fittings**

The west wall contained a wall box at the north end and a low blocked arched opening at the south end. The north end of the room contained a secondary grinding trough, still in use, whilst to the south there was a large overhead RSJ structure leading from the double doors.

3

Power

Wall boxes are present within the west wall, although serving the adjacent 1.34, it is not known if the power was transferred and utilised within the room.

4

Heating

No heating. All traces of former hand forge hearths/flues have been removed.

Discussion and Assessment of Significance**Level: 4**

The original function and layout of the bay has been substantially altered and few original fixtures and fittings have been retained, which in turn has decreased the significance. The presence of the last remaining grinding trough however is of importance.

Management Issues

The space is currently used as a workshop and store. There are few fixtures and fittings which need managing, other than the grinding trough, although secondary. The main priority would be the management of water ingress from the roof and skylights.



IMG_1321



IMG_1330



IMG_1333



IMG_1334



Block G - Ground Floor (17-2)

1.35



IMG_1336

Block G - Ground Floor (15-2a)**1.36****Location**

Located attached to the south of the western bay of 1.34, comprising the southwest corner of the central range, Block G, in the centre of the works yard.

History

This space is a result of multiphased redevelopment and construction. Originally a phase 2 extension of the hand forges in the western bay of 1.34, comprising two further hand forges. These were then modified and extended upwards during phase 4. A small irregularly shaped room also was added to the south.

Architectural Elements**Significance****Layout/circulation/access**

The space comprises a single room which was originally two separate hand forges. The former dividing wall has been largely removed and the space opened into one, although doorways for each former room were retained in the west wall. A blocked doorway in the east wall of the northern half of the room once accessed the adjacent 1.37, whilst a second blocked doorway in the south wall once accessed the room to the south.

3

Wall

All walls were painted brick and blockwork. The east wall was of an earlier phase (1b), and its west (internal) elevation was once an external elevation for a former building attached to the south side of the central bay of 1.34.

3

Ceiling

The ceiling is shuttered concrete throughout.

4

Floor

The floor is concrete throughout.

5

Windows

The northern room originally contained two windows adjacent to their respective doors in the west wall, however only the southern window has been retained, whilst the northern has been encompassed by the widened door. The east wall contained two former windows serving an earlier range to the east. The northernmost had been altered to a door and blocked, whilst the southern had been blocked with brick, yet retained its projecting stone sill. Two modern UPVC windows served the small room attached to the south.

3

Block G - Ground Floor (15-2a)**1.36**

Doors	The door within the west wall serving the northern half of the room was modern and had been widened, taking over the former adjacent window. To the south the original door and window arrangement had been retained and an original timber battened door was in situ. In addition the south wall contained a blocked door with the attached southern room. This southern room contained a modern UPVC door.	3
Fixtures and fittings	Three high brick flues have been retained within the room which would have functioned as part of the hand forges. A possible fourth flue may have been located at the north end of the room. The attached room to the south contained no fixtures or fittings.	2
Power	A blocked wall box was positioned within the east wall at the north end, but not visible within the room.	4
Heating	Not retained, but originally there would have been at least three hearths.	

Discussion and Assessment of Significance**Level: 3**

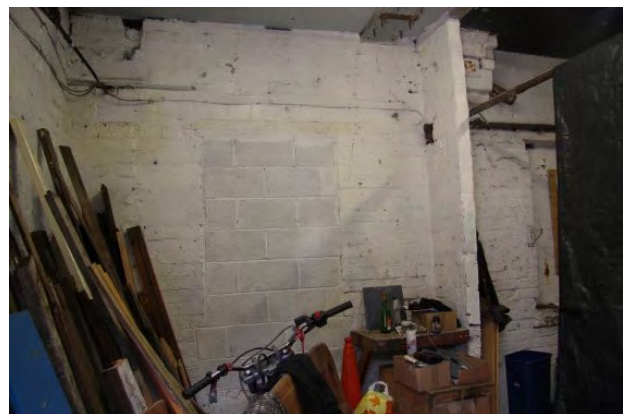
The multiphase aspect of the space renders it as fairly significant, along with remains of at least three hand forge flues and an original door. The removal of the dividing partition of the former hand forges has affected the significance of the layout however. The attached room to the south is of very low significance with many modern alterations and additions.

Management Issues

Currently the space is used as storage and a small office, with the attached room at the south also utilised as a small office. The retention of historic fixtures and fittings is a priority within this space.



IMG_1367



IMG_1698



Block G - Ground Floor (15-2a)

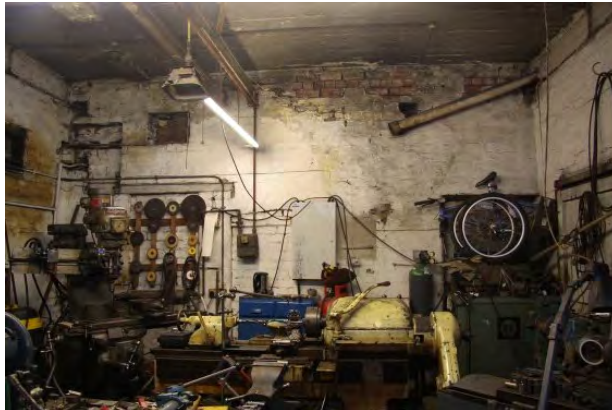
1.36



IMG_1713

Block G - Ground Floor (15-2b, 16)

1.37



Location Positioned at the south side of the central range, Block G, comprising the central and south-eastern bays.

History

1.37 was added to the south of 1.35 and 1.34 during phase 4 along with 1.38 above. The central bay was originally open to the south but infilled in during phase 5. Little other changes have been undertaken within the space.

Architectural Elements

Significance

Layout/circulation/access	The south-eastern bay contained a single room with chamfered southeast corner. The room was accessed by a doorway in the south wall and via a small set of steps down into the room. A second but inserted doorway was positioned within the east wall. The central bay comprised a staircase leading up to 1.38, and a single room accessed by a large door to the south. A blocked doorway was positioned within the earlier, phase 1b, west wall which had once given access to 1.36. The north wall was a modern blockwork construction, blocking the former large archway of 1.34.	4
Wall	The walls are all painted brick and blockwork.	4
Ceiling	The ceiling is painted shuttered concrete throughout.	4
Floor	The floor is concrete throughout.	4
Windows	The south-eastern room contained a primary window within the east and south wall, with a further inserted window within the south wall.	4
Doors	A primary opening accessing the south-eastern room contained a modern door, whilst an inserted doorway in the east wall had a modern door along with the large double doors serving the central bay. The north wall of the south-eastern room contained three blocked openings once accessing 1.35 to the north. There was also a blocked door within the west wall of the central room once accessing 1.36.	5
Fixtures and fittings	There were wall boxes present within each of the rooms, whilst the south-eastern room contained a large amount of metal working machinery.	4

Block G - Ground Floor (15-2b, 16)**1.37**

Power	A wall box was positioned within each of the rooms indicating power within both.	3
Heating	No heating.	5

Discussion and Assessment of Significance**Level: 4**

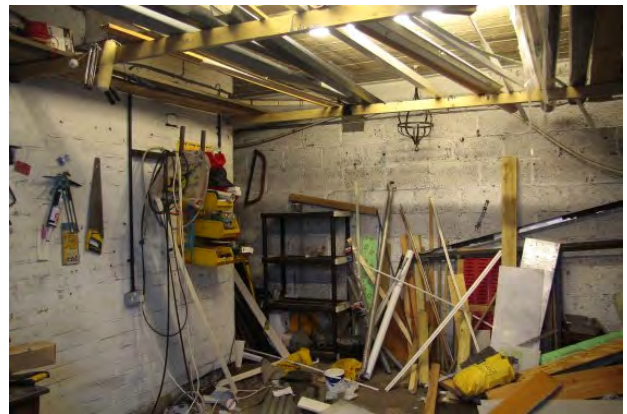
The rooms have a low significance in terms of date of construction and retained fixtures and fittings, however the continued function of the south-east room as a workshop is of higher significance.

Management Issues

The central room is currently used as a store, and has no heating or fenestration. The south-eastern room functions as a metal workshop and requires little management. Priorities are the management of fenestration and doors.



IMG_1373



IMG_1867



IMG_2125

Block G - First Floor (28)

1.38



Location

The first floor of the south end of the central range, Block G.

History

Constructed during phase 4 with very few alterations other than a single inserted modern partition creating a small office.

Architectural Elements

Significance

Layout/circulation/access

Accessed via a staircase from 1.37 below, 1.38 comprises three main rooms, the western room having been subdivided into two by a modern partition. All are interconnected and an inserted doorway at the east end of the north wall provides access from the flat roof of 1.35 to the north.

3

Wall

All walls are painted brick, with the exception of a modern inserted partition.

4

Ceiling

The rooms are open to the roof with boarding attached to the underside of the common rafters. Damage due to water ingress was evident.

4

Floor

Concrete throughout.

4

Windows

Fenestration is positioned along all walls with timber casement windows. The south wall of the west room contained blocked windows internally, although these were retained externally.

3

Doors

No primary doors have been retained. Primary openings were present at the top of the staircase. The east room contained an inserted doorway with modern door to the north and a blocked and inserted door within the west wall.

5

Fixtures and fittings

Very few original fixtures and fittings retained. The central and east rooms contained knife making machinery and the west room contained office amenities.

4

Power

No power observed.

Heating

Blocked fireplaces/hearths were positioned within the eastern and western rooms. There was no heating within the central room.

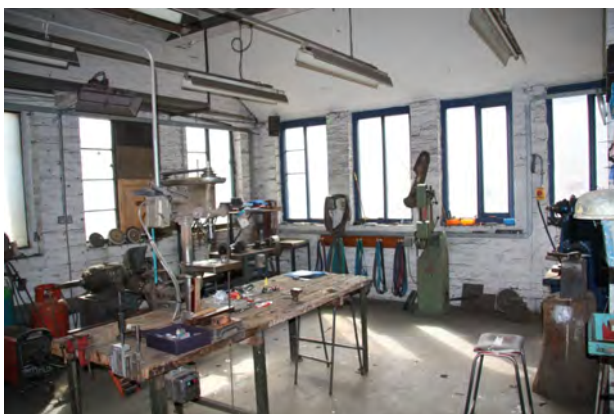
3

Block G - First Floor (28)**1.38****Discussion and Assessment of Significance****Level: 4**

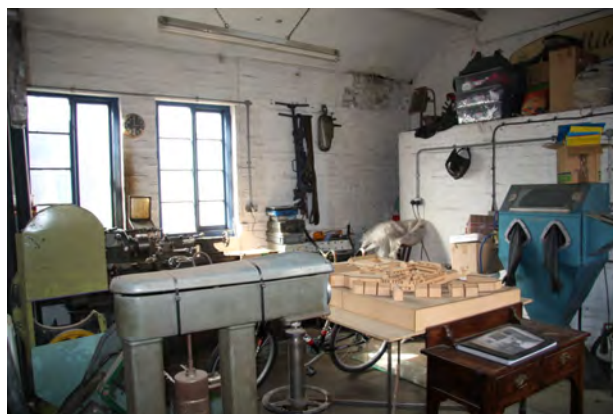
The original layout of the workshop room has been essentially retained, although the main significance of space lies in its continuing industrial use.

Management Issues

The rooms are currently used as a knife making working with works office. The roof and fenestration is in need of attention. Very few fixtures and fittings are in need of specific management.



IMG_0835



IMG_0840



IMG_0843



IMG_0844



IMG_0847



IMG_0849



Block G - First Floor (28)

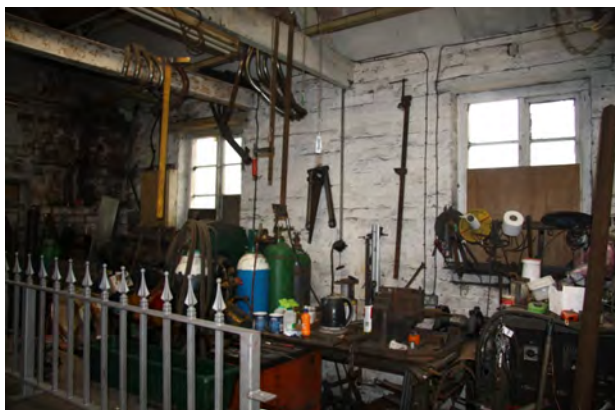
1.38



IMG_1215

Block F - Ground Floor (14-4)

1.39



Location

Positioned to the west of the central range, Block G, and to the south of chimney 1.40 is 1.39, Block F, in the western half of the works yard.

History

This range was constructed over two main phases, with the northern building constructed during phase 3a and the southern building attached during phase 3b. The northern building was being used for electroplating by 1908. The buildings have undergone significant changes and alterations since their construction including modifications associated with the addition of 1.14 in phase 4.

Architectural Elements

Significance

Layout/circulation/access

The single-storey buildings are L-shaped in plan and comprise three interconnected ground floor rooms. The northern building contains a single room accessed by a large inserted doorway in the west wall and a pedestrian door in the east wall. A narrowed doorway in the south wall gives access to the southern building with two rooms, which could also be accessed from the south, a doorway to the east or an inserted doorway to the west.

4

Wall

All walls are painted brick.

4

Ceiling

Both buildings are open to the roof. The northern building has two exposed timber King-Post trusses. The southern building has exposed timber purlins.

3

Floor

Concrete floor throughout both buildings.

4

Windows

All windows within both buildings are later inserts with timber casement frames.

4

Doors

The northern building contained a doorway to the north (no access), one to the east and one to the south. The southern doorway leading to the southern building, originally being part of an external façade, had an impressive large segmental stone voussoir lintel. This door had been narrowed during phase 3b when the southern building was added.

4

Fixtures and fittings

Very few historic fixtures and fittings had been retained.

4

Power

No power.

5

Block F - Ground Floor (14-4)**1.39****Heating**

The northern building contained a corner fireplace/hearth at the northeast. The southern building contained a phase 4 chimney/flue at a high level supported by RSJs, likely for 1.14 above, but it may also have served this southern building.

3**Discussion and Assessment of Significance****Level: 3**

The space has been substantially altered over the past century which has lowered the significance of the buildings.

Management Issues

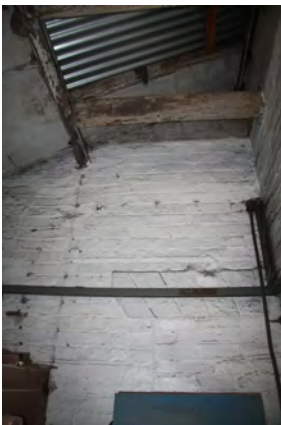
Currently the building is used for manufacturing of metal goods. The condition of the roof is a priority, whilst the management of the spray painting against external elevations around the works would be beneficial.



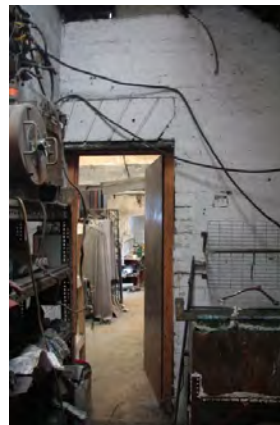
IMG_0888



IMG_0898



IMG_0902



IMG_0904



Block F - Ground Floor (14-4)

1.39



IMG_1402

Chimney

1.40

Location

The works chimney is positioned at the northwest corner of the central works yard.

History

The chimney was built during the phase 1 construction of the works. The chimney was later lowered, probably during WWII (phase 6).

Architectural Elements

Significance

Layout/circulation/access

The chimney is octagonal in plan and constructed with red brick.

2

Discussion and Assessment of Significance

Level: 2

The survival of chimneys within former integrated cutlery works within Sheffield is rare, making this, despite having been truncated, of high significance.

Management Issues

The chimney requires some repair work and removal of vegetation.



IMG_1463



salisbury rochester sheffield edinburgh



Wessex Archaeology Ltd registered office Portway House, Old Sarum Park, Salisbury, Wiltshire SP4 6EB
Tel: 01722 326867 Fax: 01722 337562 info@wessexarch.co.uk www.wessexarch.co.uk



Wessex Archaeology Ltd is a company limited by guarantee registered in England, company number 1712772. It is also a Charity registered in England and Wales, number 287786; and in Scotland, Scottish Charity number SC042630. Our registered office is at Portway House, Old Sarum Park, Salisbury, Wiltshire SP4 6EB.